

## TERMOELEMENTTI ERILLISELLE SUOJATASKULLE

TC10-B

TC10B-14365198  
K Tyyppi -40-1200°C 150x6mm G1/2" NL=50mm

- Tyyppi K, J, E, N tai T
- Mitta-alue -40-1200°C
- Vaihdeettava mittaosa
- Kaulan pituus 30mm ylöspäin
- SIL2 ja Atex optiot



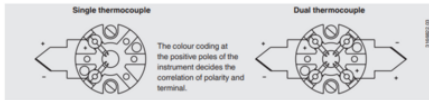
### TUOTEKUVAUS

Tämän sarjan termoelementit voidaan liittää lukuisiin suojataskumalleihin. Käyttö ilman suojataskua on suositeltavaa ainoastaan erikoistapauksissa. Lämpötila-antureihin on saatavilla laaja valikoima mahdollisia anturien ja liitäntäpäiden yhdistelmiä, mittauskärkien pituuksia, kaulan pituuksia, suojataskuliitäntöjä jne., jotka sopivat minkä tahansa kokoiseen suojataskuun ja mihin tahansa käyttökohteeseen.

### TEKNISET TIEDOT

<b>Aineen kanssa kosketuksissa olevien osien materiaali</b>	Inococonel - 600
<b>Asennussyvyys</b>	150 mm
<b>IP-luokka</b>	IP65
<b>Kaulan pituus</b>	0,05 m
<b>Kytinkotelon materiaali</b>	Ruostumaton teräs 316Ti
<b>Max. käyttölämpötila</b>	1200 °C
<b>Max. ympäristön lämpötila</b>	80 °C
<b>Min. käyttölämpötila</b>	-40 °C
<b>Min. ympäristön lämpötila</b>	-40 °C
<b>Pistokkeen halkaisija</b>	6 mm
<b>Rungon materiaali</b>	Alumiini

Electrical connection



Connection head

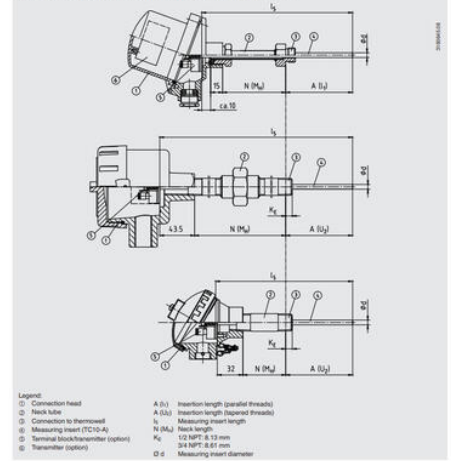
European designs per EN 50446 / DIN 43735



Model	Material	Cable entry thread size	Ingress protection (max)	Cap	Surface	Connection to neck tube
BS	Aluminum	M20 x 1.5 or 1/2 NPT <sup>1)</sup>	IP65, IP68	Flat cap with 2 screws	Blk. lacquered <sup>2)</sup>	M24 x 1.5, 1/2 NPT
BSZ	Aluminum	M20 x 1.5 or 1/2 NPT <sup>1)</sup>	IP65, IP68	Spherical fringed cover with cylinder head screw	Blk. lacquered <sup>2)</sup>	M24 x 1.5, 1/2 NPT
BSZ-H	Aluminum	M20 x 1.5 or 1/2 NPT <sup>1)</sup>	IP65, IP68	Raised fringed cover with cylinder head screw	Blk. lacquered <sup>2)</sup>	M24 x 1.5, 1/2 NPT
BSZ-H (2x cable outlet)	Aluminum	2 x M20 x 1.5 or 2 x 1/2 NPT <sup>1)</sup>	IP65, IP68	Raised fringed cover with cylinder head screw	Blk. lacquered <sup>2)</sup>	M24 x 1.5
BSZ-H / DN10 <sup>3)</sup>	Aluminum	M20 x 1.5 or 1/2 NPT <sup>1)</sup>	IP65	Raised fringed cover with cylinder head screw	Blk. lacquered <sup>2)</sup>	M24 x 1.5, 1/2 NPT
BSS	Aluminum	M20 x 1.5 or 1/2 NPT <sup>1)</sup>	IP65	Spherical fringed cover with clamping lever	Blk. lacquered <sup>2)</sup>	M24 x 1.5, 1/2 NPT
BSS-H	Aluminum	M20 x 1.5 or 1/2 NPT <sup>1)</sup>	IP65	Raised fringed cover with clamping lever	Blk. lacquered <sup>2)</sup>	M24 x 1.5, 1/2 NPT
BVS	Stainless steel	M20 x 1.5 <sup>3)</sup>	IP65	Phosphor-bronze screw-on lid	Blank, electropolished	M24 x 1.5
BSZ-K	Plastic	M20 x 1.5 or 1/2 NPT <sup>1)</sup>	IP65	Spherical fringed cover with cylinder head screw	Black	M24 x 1.5
BSZ-HK	Plastic	M20 x 1.5 or 1/2 NPT <sup>1)</sup>	IP65	Raised fringed cover with cylinder head screw	Black	M24 x 1.5

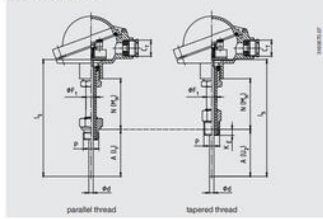
Model	Explosion protection				
	Without	Ex I (gas) Zone 0, 2	Ex II (dust) Zone 20, 21, 22	Ex nA (gas) Zone 2	Ex IIc (dust) Zone 22
BS	x	x	-	-	-
BSZ	x	x	x	x	x
BSZ-H	x	x	x	x	x
BSZ-H (2x cable outlet)	x	x	x	x	x
BSZ-H / DN10 <sup>3)</sup>	x	x	-	-	-
BSS	x	x	-	-	-
BSS-H	x	x	-	-	-
BVS	x	x	-	-	-
BSZ-K	x	x	-	-	-
BSZ-HK	x	x	-	-	-

Fig. with parallel thread, for tapered thread see "Connection to thermowell"

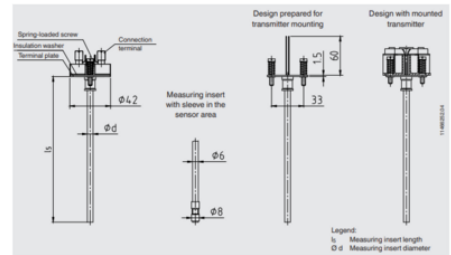
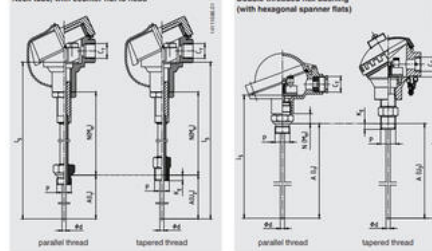


Neck tube designs

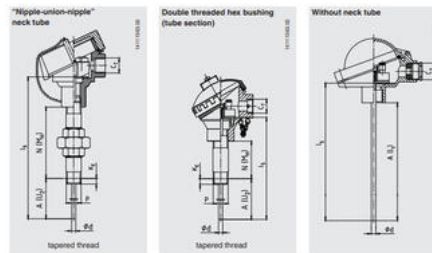
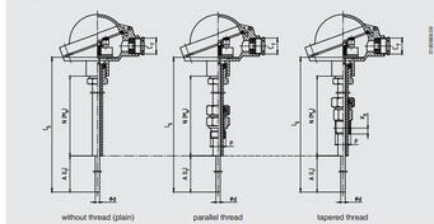
Neck tube per DIN 43772



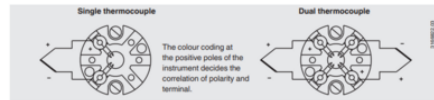
Neck tube, with counter nut to head



Neck tube per DIN 43772, straight, with/without compression fitting

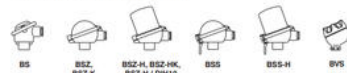


Electrical connection



Connection head

European designs per EN 50446 / DIN 43735



Model	Material	Cable entry thread size	Ingress protection (max)	Cap	Surface	Connection to neck tube
BS	Aluminum	M20 x 1.5 or 1/2 NPT <sup>1)</sup>	IP65, IP68	Flat cap with 2 screws	Blk. lacquered <sup>2)</sup>	M24 x 1.5, 1/2 NPT
BSZ	Aluminum	M20 x 1.5 or 1/2 NPT <sup>1)</sup>	IP65, IP68	Spherical fringed cover with cylinder head screw	Blk. lacquered <sup>2)</sup>	M24 x 1.5, 1/2 NPT
BSZ-H	Aluminum	M20 x 1.5 or 1/2 NPT <sup>1)</sup>	IP65, IP68	Raised fringed cover with cylinder head screw	Blk. lacquered <sup>2)</sup>	M24 x 1.5, 1/2 NPT
BSZ-H (2x cable outlet)	Aluminum	2 x M20 x 1.5 or 2 x 1/2 NPT <sup>1)</sup>	IP65, IP68	Raised fringed cover with cylinder head screw	Blk. lacquered <sup>2)</sup>	M24 x 1.5
BSZ-H / DN10 <sup>3)</sup>	Aluminum	M20 x 1.5 or 1/2 NPT <sup>1)</sup>	IP65	Raised fringed cover with cylinder head screw	Blk. lacquered <sup>2)</sup>	M24 x 1.5, 1/2 NPT
BSS	Aluminum	M20 x 1.5 or 1/2 NPT <sup>1)</sup>	IP65	Spherical fringed cover with clamping lever	Blk. lacquered <sup>2)</sup>	M24 x 1.5, 1/2 NPT
BSS-H	Aluminum	M20 x 1.5 or 1/2 NPT <sup>1)</sup>	IP65	Raised fringed cover with clamping lever	Blk. lacquered <sup>2)</sup>	M24 x 1.5, 1/2 NPT
BVS	Stainless steel	M20 x 1.5 <sup>3)</sup>	IP65	Phosphor-bronze screw-on lid	Blank, electropolished	M24 x 1.5
BSZ-K	Plastic	M20 x 1.5 or 1/2 NPT <sup>1)</sup>	IP65	Spherical fringed cover with cylinder head screw	Black	M24 x 1.5
BSZ-HK	Plastic	M20 x 1.5 or 1/2 NPT <sup>1)</sup>	IP65	Raised fringed cover with cylinder head screw	Black	M24 x 1.5

Model	Explosion protection				
	Without	Ex I (gas) Zone 0, 2	Ex II (dust) Zone 20, 21, 22	Ex nA (gas) Zone 2	Ex IIc (dust) Zone 22
BS	x	x	-	-	-
BSZ	x	x	x	x	x
BSZ-H	x	x	x	x	x
BSZ-H (2x cable outlet)	x	x	x	x	x
BSZ-H / DN10 <sup>3)</sup>	x	x	-	-	-
BSS	x	x	-	-	-
BSS-H	x	x	-	-	-
BVS	x	x	-	-	-
BSZ-K	x	x	-	-	-
BSZ-HK	x	x	-	-	-

Fig. with parallel thread, for tapered thread see "Connection to thermowell"

