

MONIPISTEINEN VASTUSLÄMPÖTILA-ANTURI

TR95

TR95
 Monipisteanturi "hihnamalli"

- Asiakassovelletut mallit
- Laaja valikoima prosessiilientöjä
- Suojataskulla tai ilman
- Vaihdeettava mittapäät
- Jopa kymmenen mittapistettä



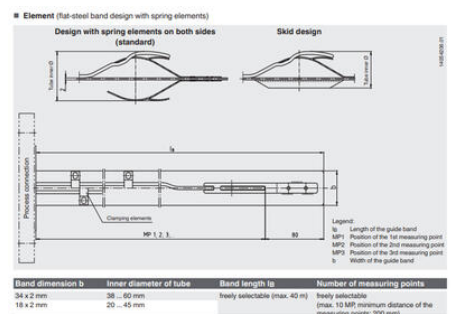
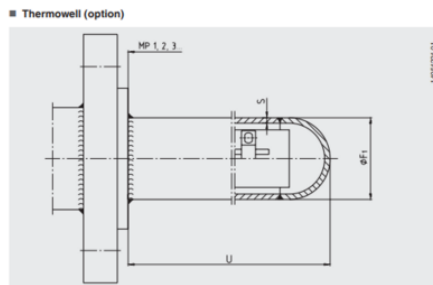
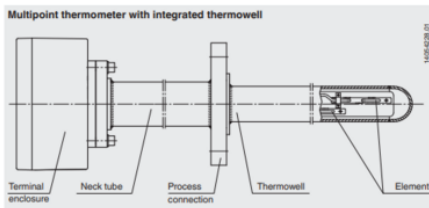
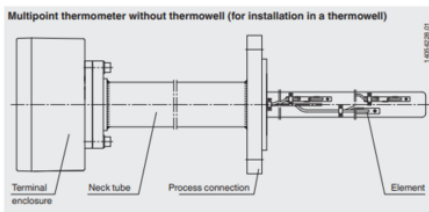
TUOTEKUVVAUS

Monipisteisiä vastuslämpötila-antureita käytetään usein mittaamaan lämpötilaprofiileja reaktoreista, polttoainevarastoista tai havaita ns. "hotspot" kohtia.

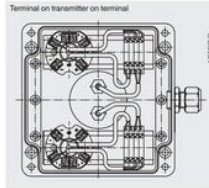
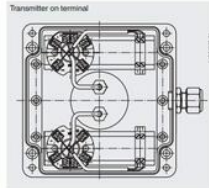
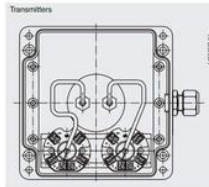
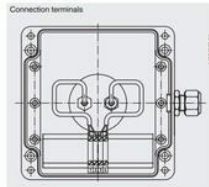
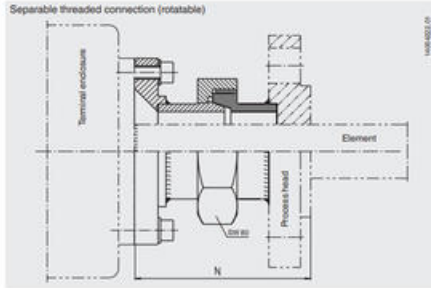
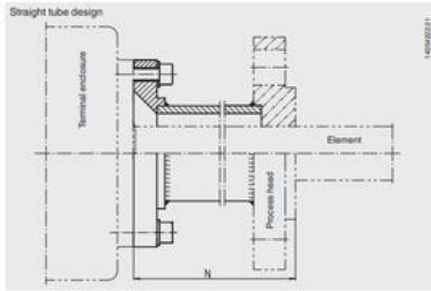
Tämä anturityyppi valmistetaan aina asiakkaan sovelluksen mukaan räätälöidysti.

TEKNISET TIEDOT

Aineen kanssa kosketuksissa olevien osien materiaali	Alloy, Hiiliteräs
Hyväksynät	NAMUR, Ex-ia
Materiaali	Ruostumaton teräs 316L, Ruostumaton teräs 316Ti



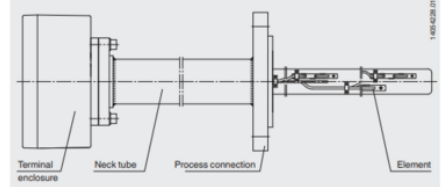
■ Neck tube



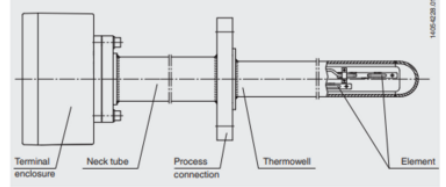
The actual wiring can deviate from the illustration in the data sheet.

Connection options in the terminal enclosure	Terminal enclosure dimensions in mm		
	ca. 160 x 160	ca. 160 x 260	ca. 250 x 400
Connection terminals	up to 10 MP	up to 10 MP	up to 10 MP
Transmitters	up to 4 MP	up to 8 MP	up to 10 MP
Transmitter on terminal	up to 3 MP	up to 8 MP	up to 10 MP
Terminal on transmitter on terminal	up to 2 MP	up to 4 MP	up to 8 MP

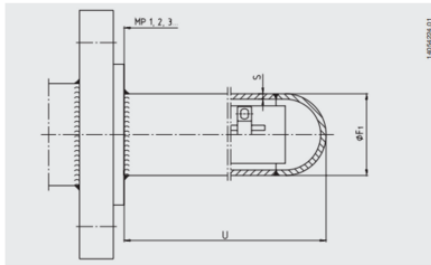
■ Multipoint thermometer without thermowell (for installation in a thermowell)



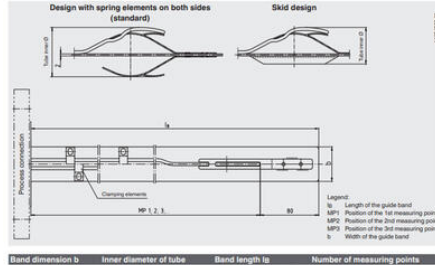
■ Multipoint thermometer with integrated thermowell



■ Thermowell (option)

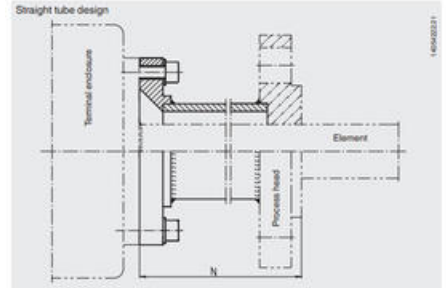


■ Element (flat steel band design with spring elements)

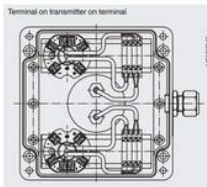
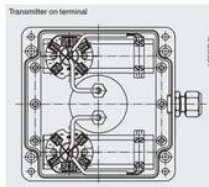
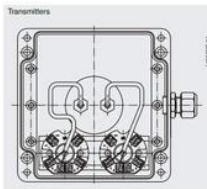
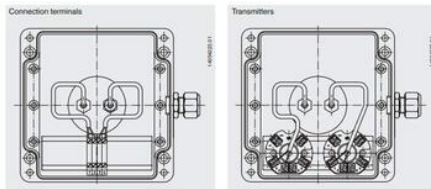
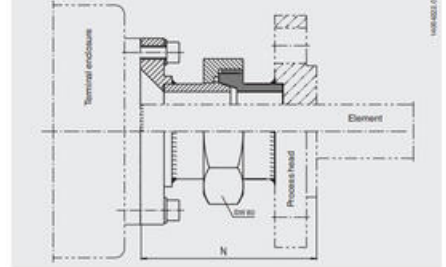


Band dimension b	Inner diameter of tube	Band length l _b	Number of measuring points
34 x 2 mm	38 – 60 mm	freely selectable (max. 40 m)	freely selectable
18 x 2 mm	20 – 45 mm		(max. 10 MP; minimum distance of the measuring points: 200 mm)

■ Neck tube



■ Separable threaded connection (rotatable)



The actual wiring can deviate from the illustration in the data sheet.

Connection options in the terminal enclosure	Terminal enclosure dimensions in mm		
	ca. 160 x 160	ca. 160 x 260	ca. 250 x 400
Connection terminals	up to 10 MP	up to 10 MP	up to 10 MP
Transmitters	up to 4 MP	up to 8 MP	up to 10 MP
Transmitter on terminal	up to 3 MP	up to 8 MP	up to 10 MP
Terminal on transmitter on terminal	up to 2 MP	up to 4 MP	up to 8 MP