

# NAUHAMALLINEN MONIPISTETERMOELEMENTTI

TC95

TC95

Nauhamallinen monipistetermoelementti kiristimellä

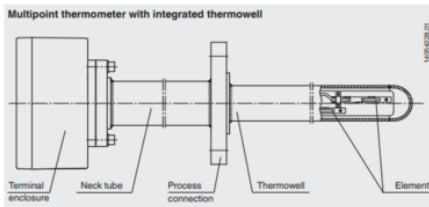
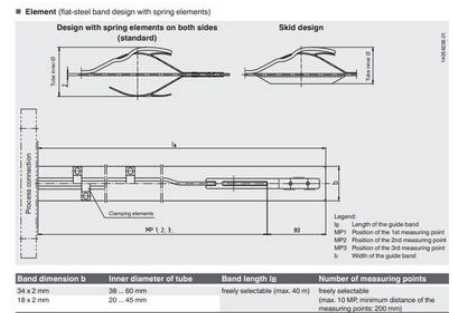
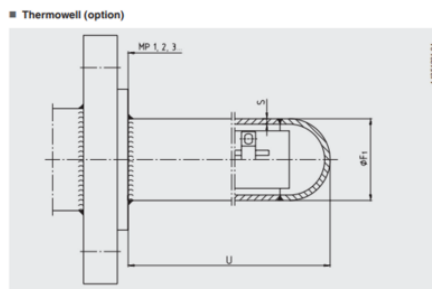
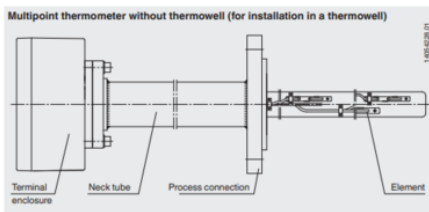
- Asiakassovelletut versiot
- Laaja valikoima prosessiliitäntöjä
- Suojataskulla tai ilman
- Vaihdeettava mittaosa
- Jopa 10 mittauspistettä



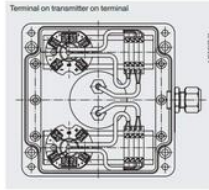
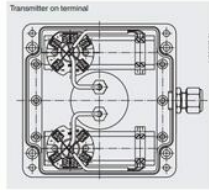
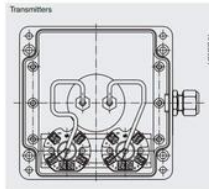
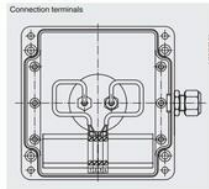
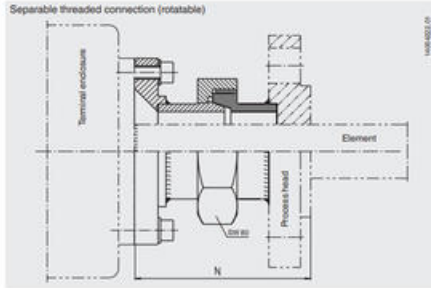
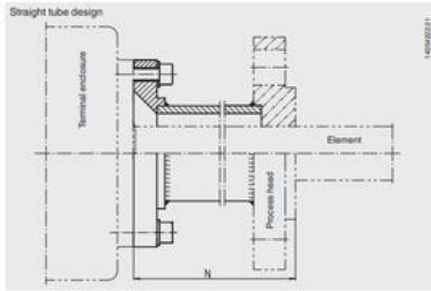
## TUOTEKUVAUS

## TEKNISET TIEDOT

<b>Aineen kanssa kosketuksissa olevien osien materiaali</b>	Alloy, Hiiliteräs
<b>Hyväksynät</b>	NAMUR, Ex-ia
<b>Materiaali</b>	Ruostumaton teräs 316L, Ruostumaton teräs 316Ti



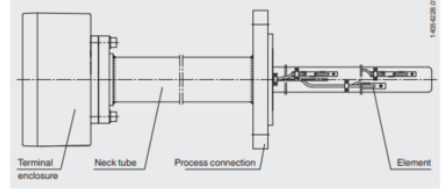
■ Neck tube



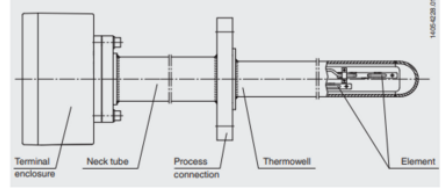
The actual wiring can deviate from the illustration in the data sheet.

Connection options in the terminal enclosure	Terminal enclosure dimensions in mm		
	ca. 160 x 160	ca. 160 x 260	ca. 250 x 400
Connection terminals	up to 10 MP	up to 10 MP	up to 10 MP
Transmitters	up to 4 MP	up to 8 MP	up to 10 MP
Transmitter on terminal	up to 3 MP	up to 8 MP	up to 10 MP
Terminal on transmitter on terminal	up to 2 MP	up to 4 MP	up to 8 MP

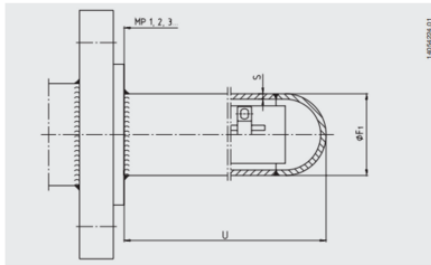
■ Multipoint thermometer without thermowell (for installation in a thermowell)



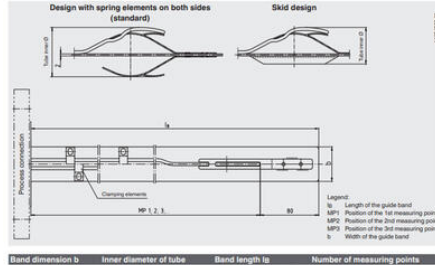
■ Multipoint thermometer with integrated thermowell



■ Thermowell (option)

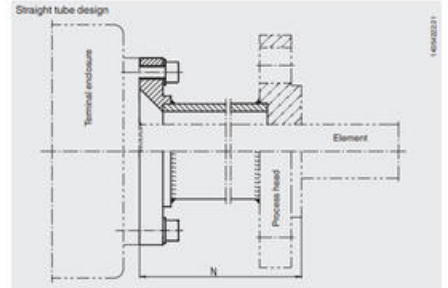


■ Element (flat steel band design with spring elements)

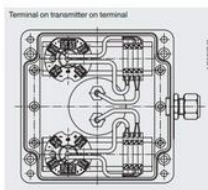
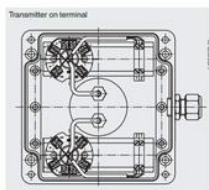
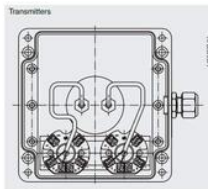
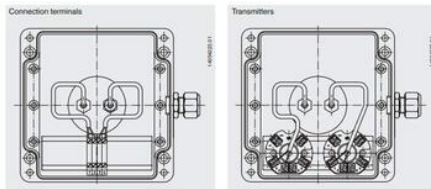
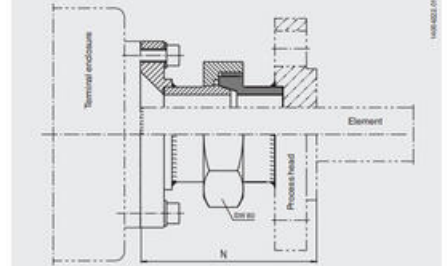


Band dimension b	Inner diameter of tube	Band length lb	Number of measuring points
34 x 2 mm	38 - 80 mm	freely selectable (max. 40 m)	freely selectable
18 x 2 mm	20 - 45 mm		(max. 10 MP minimum distance of the measuring points: 200 mm)

■ Neck tube



■ Separable threaded connection (rotatable)



The actual wiring can deviate from the illustration in the data sheet.

Connection options in the terminal enclosure	Terminal enclosure dimensions in mm		
	ca. 160 x 160	ca. 160 x 260	ca. 250 x 400
Connection terminals	up to 10 MP	up to 10 MP	up to 10 MP
Transmitters	up to 4 MP	up to 8 MP	up to 10 MP
Transmitter on terminal	up to 3 MP	up to 8 MP	up to 10 MP
Terminal on transmitter on terminal	up to 2 MP	up to 4 MP	up to 8 MP