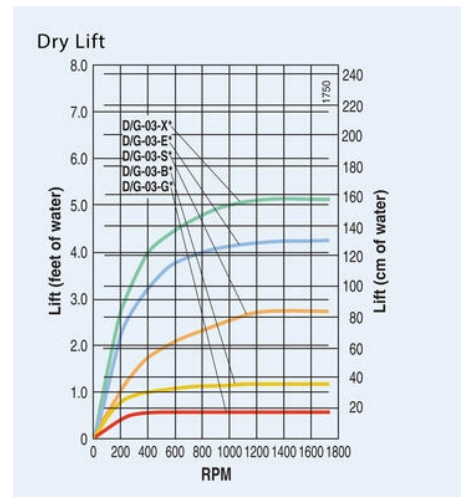
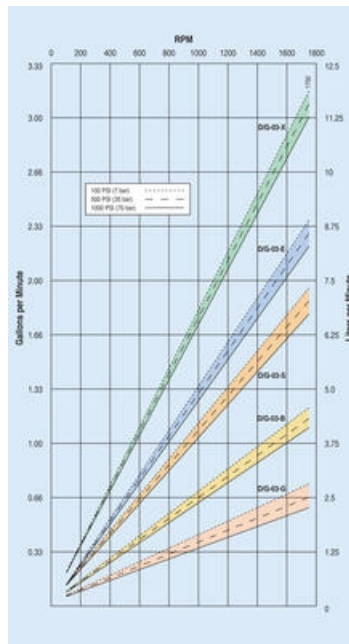
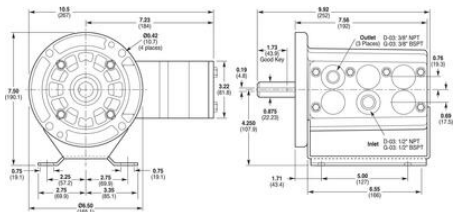


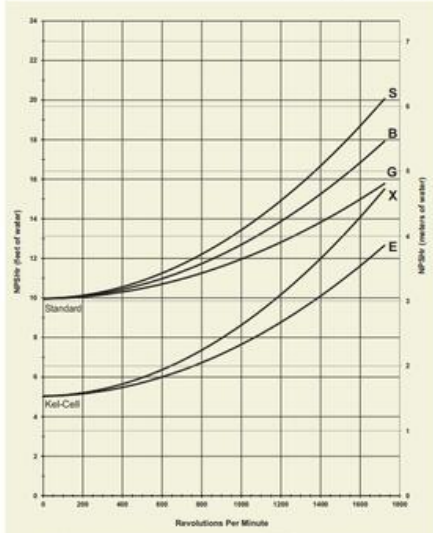


# TEKNISET TIEDOT

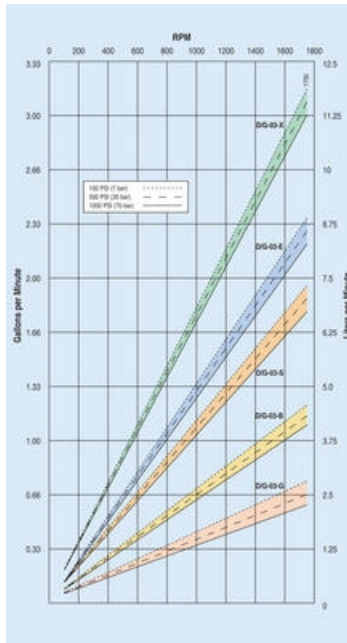
Teho (P2)	0,25 kW
Hydrauliöljyn määrä	1 l
Pyörimissuunta	Valinnainen
Max. järjestelmän paine	17 bar
Nopeus	730 rpm
Max. viskositeetti	1000 cP
art-adapteri	A04-003-1202
art-kokoonpano	MONTAGE-816
art 3-vaiheinen moottori	IEC 80-4 B3/B5
art-pumppu	G03X
Liitännän sisääntulo	BSPT 1/2"
Liitännän ulostulo	BSPT 3/8"
Max. virtaus	4,7 l/min
Pumpun materiaali	PP
Max. paine	17 bar
Asennus	Adapteri
1098_Particle size (mm)	0,2



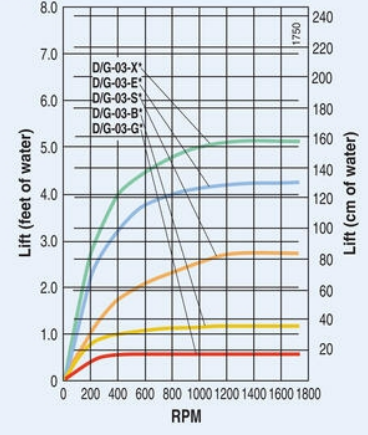
### Net Positive Suction Head (NPSHr)



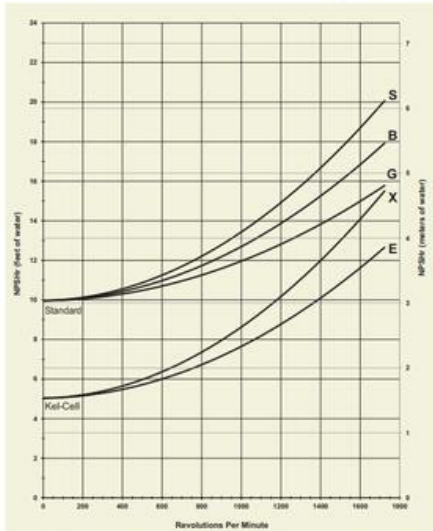
Note: Positive inlet pressure required with PTFE diaphragms.



### Dry Lift



### Net Positive Suction Head (NPSHr)



Note: Positive inlet pressure required with PTFE diaphragms.