

MO390 JOYSTICK KANTA

MO390

Joystick pohja

- Valittavissa 2-akseliset ja 1-akseliset versiot
- Analogiset ja CAN versiot
- IP67



TUOTEKUVAUS

MO390 Joystick kanta perustuu kontaktittomaan Hall mittausperiaatteeseen ja tarjoaa täysin redundanttisen rakenteen.

Laitteesta on saatavissa kaksiakselisia versioita sekä yksiakselisia versioita. Vivun liikerata on 20 astetta suuntaansa ja se palautuu automaattisesti keskiasentoon.

Joystick kannasta on valittavissa CAN versiot (CAN J1939- tai CANopen) tai analogiset versiot. Ulostulosignaali voidaan ohjelmoida asiakkaan tarpeiden mukaan.

Käyttöjännite voi olla 5 V tai 8–32 V. Kannan kotelointi täyttää IP67-suojausluokan vaatimukset.

Analog

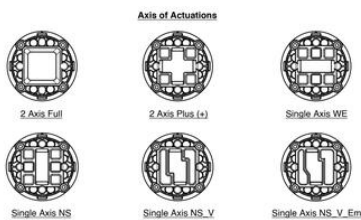
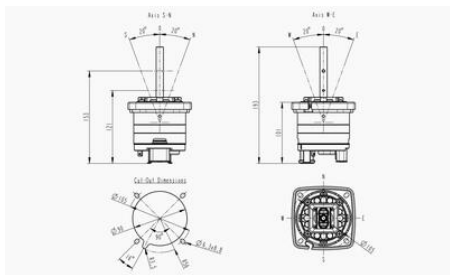
MO 390 -	H1X - Hardware	X - Axis of Actuation	X - NS Axis	X - WE Axis	XX - Lever	PXXX Program
	H10 - S:5V ; O:0-5V Analog Voltage or PWM Output	0 - 2 Axis Full	A - Free	A - Free	00 - Standard	*See the output signal diagrams
	H11 - S:5V ; O:0-32V PWM Low Side Output	1 - 2 Axis Plus (+)	B - Detent Return North- South	B - Detent Return West- East		
	H12 - S:8-32V ; O:0-5V Analog Voltage or PWM Output	2 - Single Axis WE	BN - Detent Return North	BW - Detent Return West		
	H13 - S:8-32V ; O:0-32V PWM Low Side Output	3 - Single Axis NS	BS - Detent Return South	BE - Detent Return East		

MO 390 -	H1X - Hardware	X - Axis of Actuation	X - NS Axis	X - WE Axis	XX - Lever	PXXX Program
	H14 - S:12-32V ; O:0-10V Analog Voltage Output	4 - Single Axis NS_V	C - Detent Hold North-South	C - Detent Hold West-East		
	H15 - S:12-32V ; O:4-20mA Analog Current Output	5 - Single Axis NS_V_Em	CN - Detent Hold North	CW - Detent Hold West		
	H16 - S:8-18V ; O:8-18V PWM or ON/OFF High Side Output (1.5A/Ch)		CS - Detent Hold South	CE - Detent Hold East		
	H17 - S:8-32V ; O:8-32V PWM or ON/OFF High Side Output (1.5A/Ch)		D - Friction	D - Friction		
	H18 - S:8-18V ; O:0-5V Analog Voltage Output with Neutral Position (1.5A/Ch) and Direction High Side Outputs (1.5A/Ch)		Z - No Need	Z - No Need		
	H19 - S:8-32V ; O:0-5V Analog Voltage Output with Neutral Position (1.5A/Ch) and Direction High Side Outputs (1.5A/Ch)					

CAN

MO 390 - H20	- SXX Hardware	X - Node ID <i>J1939 - CANopen</i>	X - Axis of Actuation	X - NS Axis	X - WE Axis	XX - Lever
	S10 - CAN SAE J1939	A - <u>128(80h)</u> - <u>4(04h)</u>	0 - 2 Axis Full	A - Free	A - Freel	00 - Standard
	S11 - CANopen	B - <u>129(81h)</u> - <u>5(05h)</u>	1 - 2 Axis Plus (+)	B - Detent Return North-South	B - Detent Return West-East	
	*	C - <u>130(82h)</u> - <u>6(06h)</u>	2 - Single Axis WE	BN - Detent Return North	BW - Detent Return West	
			3 - Single Axis NS	BS - Detent Return South	BE - Detent Return East	
			4 - Single Axis NS_V	C - Detent Hold North-South	C - Detent Hold West-East	
			5 - Single Axis NS_V_Em	CN - Detent Hold North	CW - Detent Hold West	
				CS - Detent Hold South	CE - Detent Hold East	
				D - Friction	D - Friction	
				Z - No Need	Z - No Need	

IP-luokka	IP67
Käyttölämpötila-alue	-40 - 85 °C
Liikerata	20°
Lähdöt	CAN / Analog / PWM
Pituus	193 mm
Syöttöjännite	5V tai 8-32V

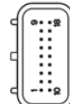


DEUTSCH CONNECTOR

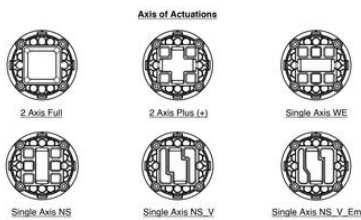
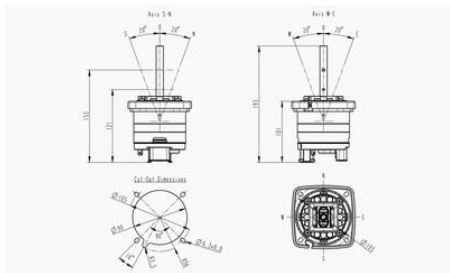


Mating Connector :
DT 06-085A

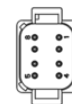
TYCO CONNECTOR



Mating Connector :
TE 2203663-5

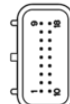


DEUTSCH CONNECTOR



Mating Connector :
DT 06-085A

TYCO CONNECTOR



Mating Connector :
TE 2203663-5