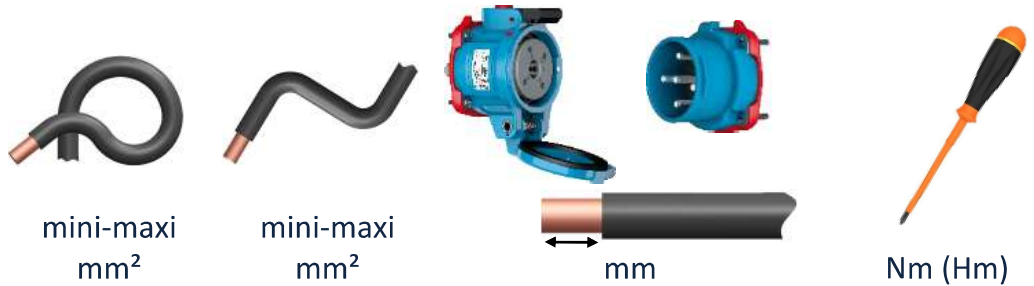






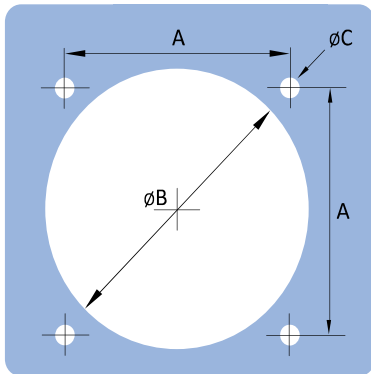


DS



Type	mini-maxi mm ²	mini-maxi mm ²	mm		Nm (Hm)	
DS1		2.5 – 6	2.5 – 10	10	19	1.5
		2.5 – 6	2.5 – 10	10	19	1.5
DS3		6 – 16	10 – 25	12	17	1.8
		1 – 2.5	1.5 – 4	14	13	0.8
DS6		10 – 25	10 – 35	24		4
DS9		25 – 70	25 – 95	30		9



	A mm	∅B mm	∅C mm
DS1	48	57	5
DS3	55	69	5
DS6	66	81	6
DS9	81	100	6



IS 06-1 [DS1/DS3/DS6/DS9] Rev A.7 - 2025-07