

FLUKS

YOUR HYDRAULIC SOLUTIONS PARTNER



ROTARY SWIVEL JOINTS CATALOG





TGB GROUP TECHNOLOGIES

With more than 30 years of experience in slew drives, slewing rings, bearings, gears, and power transmission, TGB Group Technologies has become a global leader in the development and production of motion solutions for the industrial, renewable energy, and linear markets.

Headquartered in Barcelona, TGB has a global presence with factories in China and India, a network of sales offices and warehouses throughout the world, and an R&D department in Barcelona that allows us to offer the best customized solution with the highest quality.



FLUKS

YOUR HYDRAULIC SOLUTIONS PARTNER

Our hydraulic solutions are the perfect complement to our slewing drives and slewing rings as well as being 100% compatible with market standards.

FLUKS® product range, a brand by TGB Group, has been developed by our engineering team to meet the highest standards and most challenging conditions and is a guarantee of high performance and reliability.



Central Swivel Joint

Features :

- Multiple connection and installation methods
- Multi-channel customization
- Reliable sealing and longer service life
- Compact structure and easy installation
- Effective resistance to oil pressure shock

Functional Description :

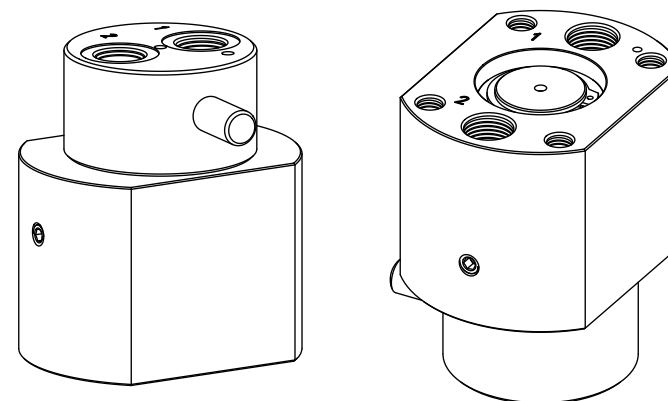
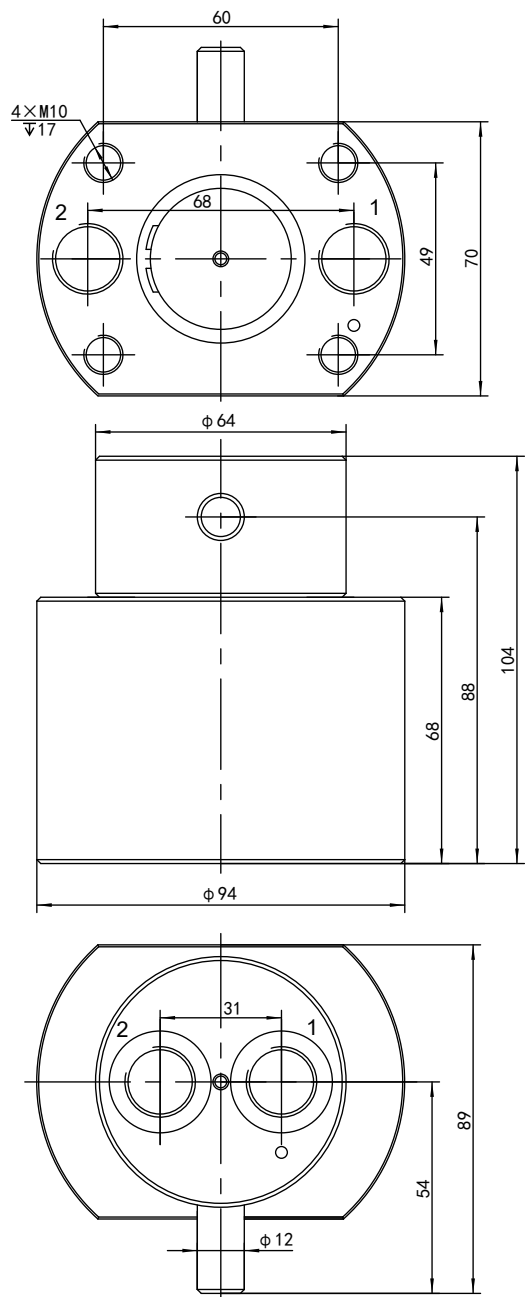
The central swivel joint consists of a swivel shaft, a swivel body, a bottom cover, and a sealing material. It is used in working conditions where the swivel mechanism including hydraulic, electrical circuits, and gas circuits needs to rotate 360 degrees.

The central swivel joint can realize 360-degree rotation of hydraulic oil pipes, transmission wires, and gas lines without motion interference. It is widely used in the swivel mechanism of excavators, cranes, aerial work vehicles, rotary drilling rigs, graders, and other equipment.

Parameter Model	Oil port	Max pressure	Max flow	Page	Parameter Model	Oil port	Max pressure	Max flow	Page
RSJ-2-1	M18×1.5	25MPa	15L/min	6	RSJ-8-5	G1/4	0.5MPa&25MPa	25L/min	46
RSJ-2-3	M18×1.5	25MPa	50L/min	8	RSJ-8-7	G1/4&G3/8&G1/2	0.5MPa&25MPa	20L/min&40L/min	48
RSJ-2-5N	G3/8	32MPa	40L/min	10		3/4-16UNF		80L/min	
RSJ-2-6	M18×1.5	32MPa	40L/min	12	RSJ-8-8	M14×1.5&M18×1.5	0.5MPa&7.5MPa	5L/min&62L/min	50
RSJ-2-10	G3/4	32MPa	150L/min	14		M20×1.5&M24×1.5		31.5MPa	
RSJ-3-5SR*	M14×1.5&M18×1.5	25MPa	20L/min&50L/min	16	RSJ-8-9	G1/4	25MPa	25L/min	52
RSJ-3-5SR*	M22×1.5	25MPa	80L/min	18	RSJ-8-10	G1/4&G3/8&G1/2	0.5MPa&5MPa	20L/min&40L/min	54
RSJ-4-1SR*	M16×1.5&M22×1.5	5MPa&32MPa	40L/min&60L/min	20				85L/min	
RSJ-4-2	G3/8	25MPa	120L/min	22	RSJ-8-12	G1/4&G3/8&G1/2	0.5MPa&5MPa	20L/min&40L/min	56
			40L/min					68L/min	
RSJ-4-3	G3/4	25MPa	80L/min	24	RSJ-9-1	G1/4	0.5MPa&25MPa	25L/min	58
RSJ-4-4	M18×1.5	25MPa	40L/min	26	RSJ-9-2SR*	M18×1.5	25MPa	60L/min	60
RSJ-6-1N	M14×1.5	25MPa	25L/min	28	RSJ-9-4	G1/4	0.5MPa&25MPa	25L/min	62
RSJ-6-3A	G1/4	25MPa	25L/min	30	RSJ-10-1	M12×1.5&M14×1.5	25MPa	30L/min	64
RSJ-6-4N	G3/8	25MPa	45L/min	32	RSJ-10-2	M12×1.5&M14×1.5	25MPa	30L/min	66
RSJ-6-10	M14×1.5&M18×1.5	25MPa	25L/min&40L/min	34	RSJ-10-3	G1/8&G1/4&G3/8	25MPa	20L/min&40L/min	68
RSJ-6-12A	G1/4	25MPa	25L/min	36	RSJ-10-4	M14×1.5	25MPa	25L/min	70
RSJ-6-14A	G1/4	25MPa	25L/min	38	RSJ-10-5	M12×1.5&M14×1.5	25MPa	30L/min	72
RSJ-7-1A	G1/4	25MPa	25L/min	40	RSJ-10-6	G1/8&G1/4&G3/8	25MPa	20L/min&40L/min	74
RSJ-8-1B	M14×1.5	25MPa	25L/min	42	RSJ-10-9	G1/4	0.5MPa&25MPa	15L/min&25L/min	76
RSJ-8-4	M14×1.5	25MPa	25L/min	44					

Outline drawing

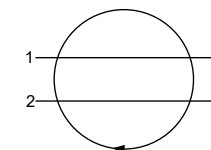
RSJ-2-1



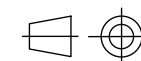
Schematic diagram

Technical parameters

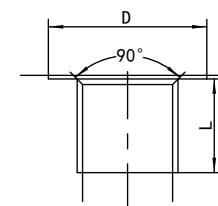
Parameter	Model	RSW-2-1
Oil port thread		M18×1.5 D=26 L=15
Oil port standard		ISO 9974-1
Max flow		15L/min
Max pressure		25MPa
Diameter		6mm
Rotation ways		2
Starting torque		≤50N.m
Rotation torque		≤30N.m
Rotation speed		≤15r/min
Weight		3.7kg
Operating temperature		-30~100°C
Working medium		46#Anti-wear hydraulic oil
Oil cleanliness		NAS1638 9&ISO4406 20/18/15
Surface protection		Spray painting



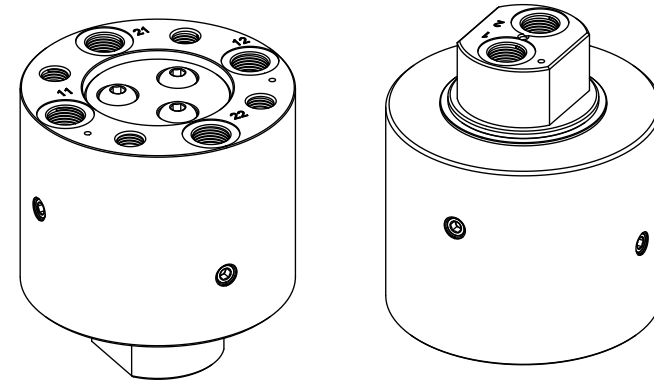
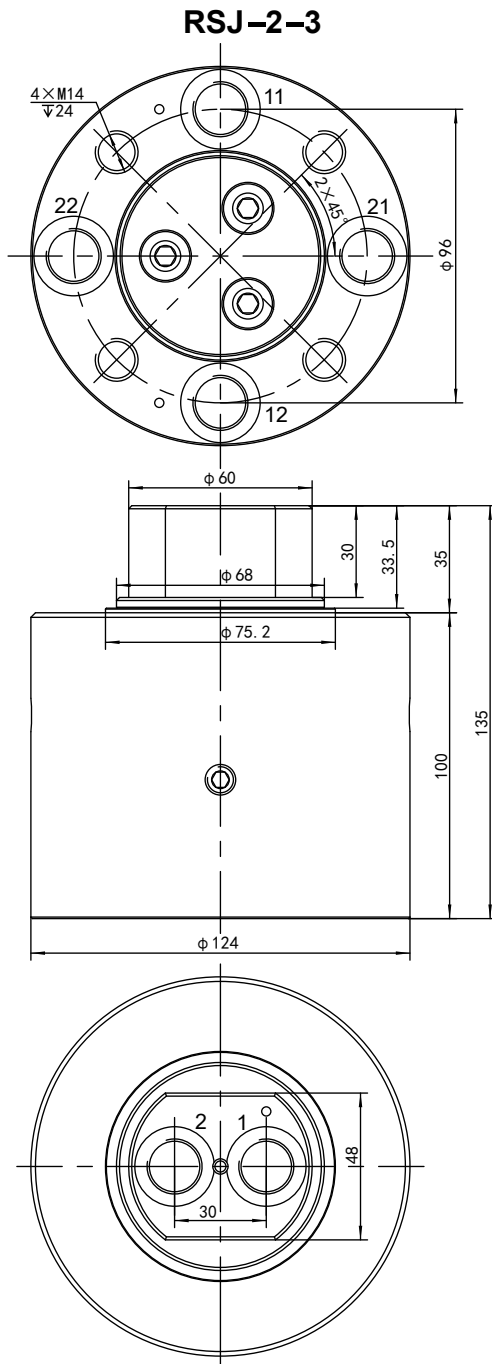
View



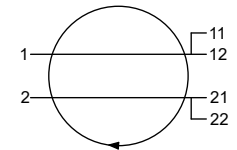
Port



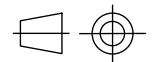
Outline drawing



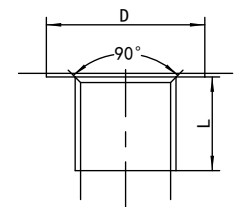
Schematic diagram



View



Port

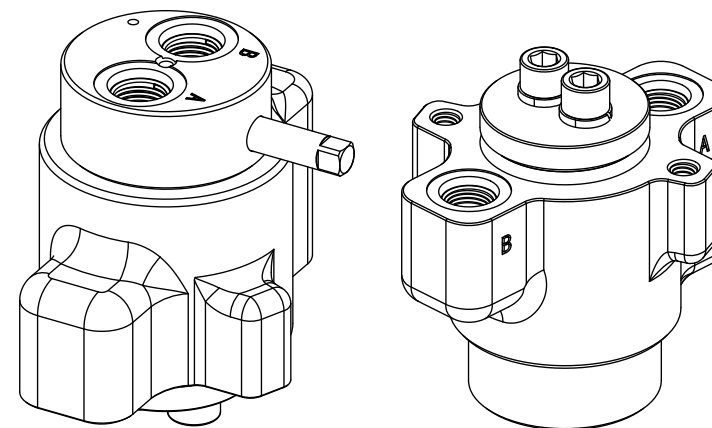
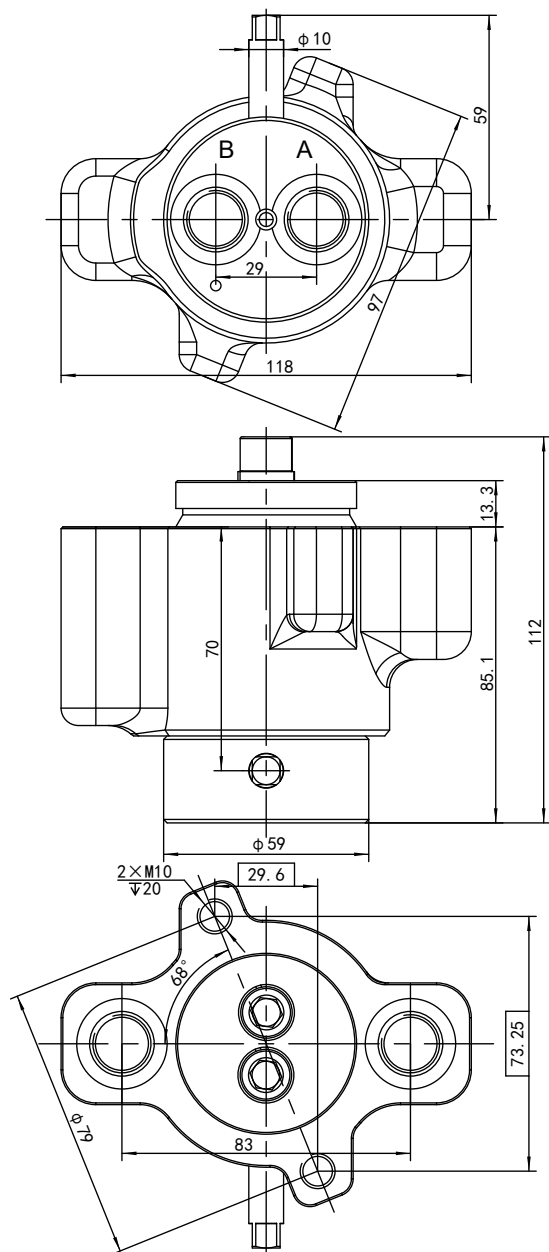


Technical parameters

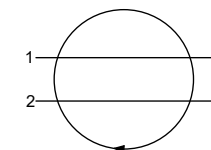
Parameter	Model	RSJ-2-3
Oil port thread		M18×1.5 D=26 L=15
Oil port standard		ISO 9974-1
Max flow		50L/min
Max pressure		25MPa
Diameter		8mm
Rotation ways		2
Starting torque		≤100N.m
Rotation torque		≤50N.m
Rotation speed		≤15r/min
Weight		8.6kg
Operating temperature		-30~100°C
Working medium		46#Anti-wear hydraulic oil
Oil cleanliness		NAS1638 9&ISO4406 20/18/15
Surface protection		Spray painting

Outline drawing

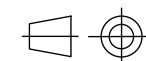
RSJ-2-5N



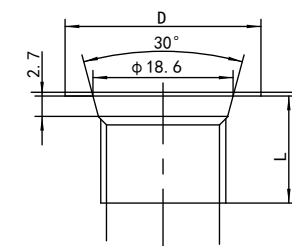
Schematic diagram



View



Port

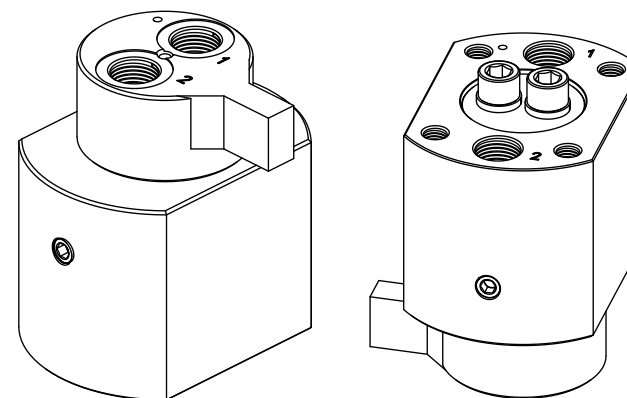
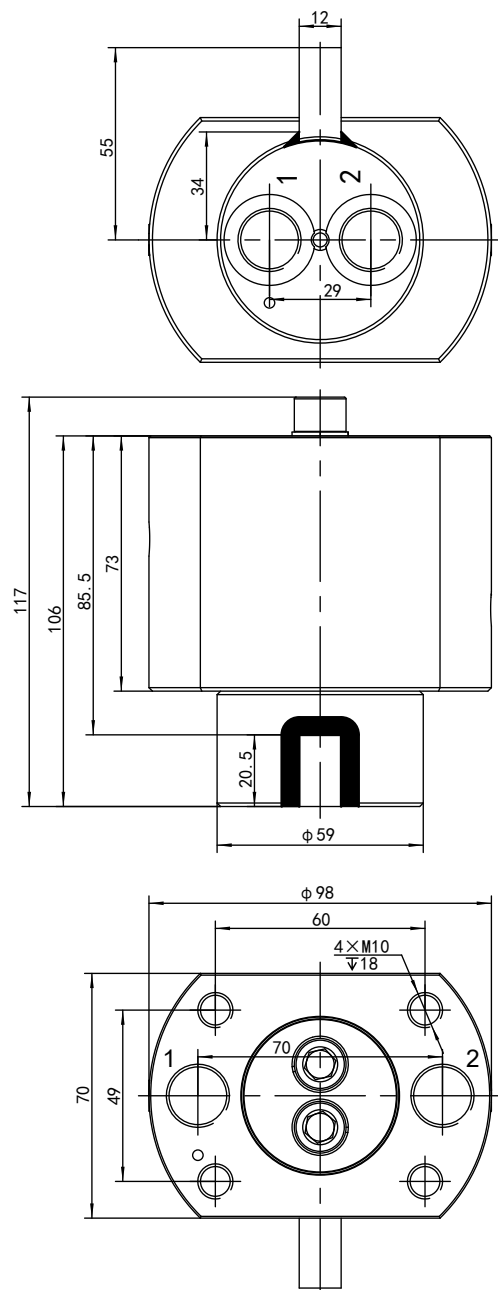


Technical parameters

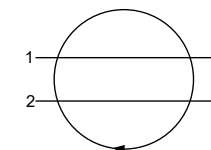
Parameter	Model	RSJ-2-5N
Oil port thread		G3/8 D=26 L=14
Oil port standard		JIS B 2351
Max flow		40L/min
Max pressure		32MPa
Diameter		8mm
Rotation ways		2
Starting torque		≤50N.m
Rotation torque		≤30N.m
Rotation speed		≤15r/min
Weight		2.8kg
Operating temperature		-30~100°C
Working medium		46#Anti-wear hydraulic oil
Oil cleanliness		NAS1638 9&ISO4406 20/18/15
Surface protection		Spray painting

Outline drawing

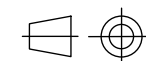
RSJ-2-6



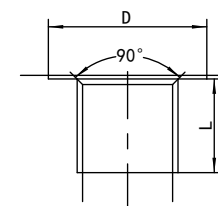
Schematic diagram



View



Port

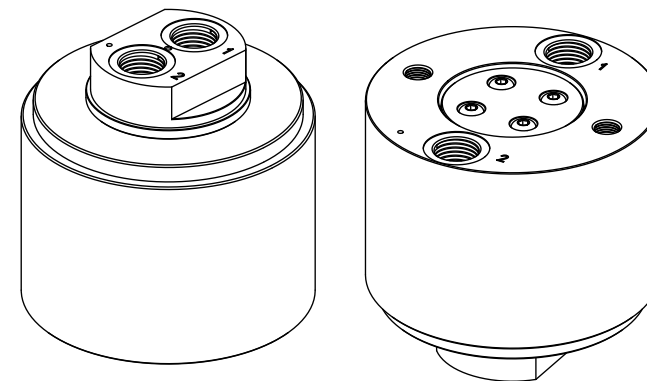
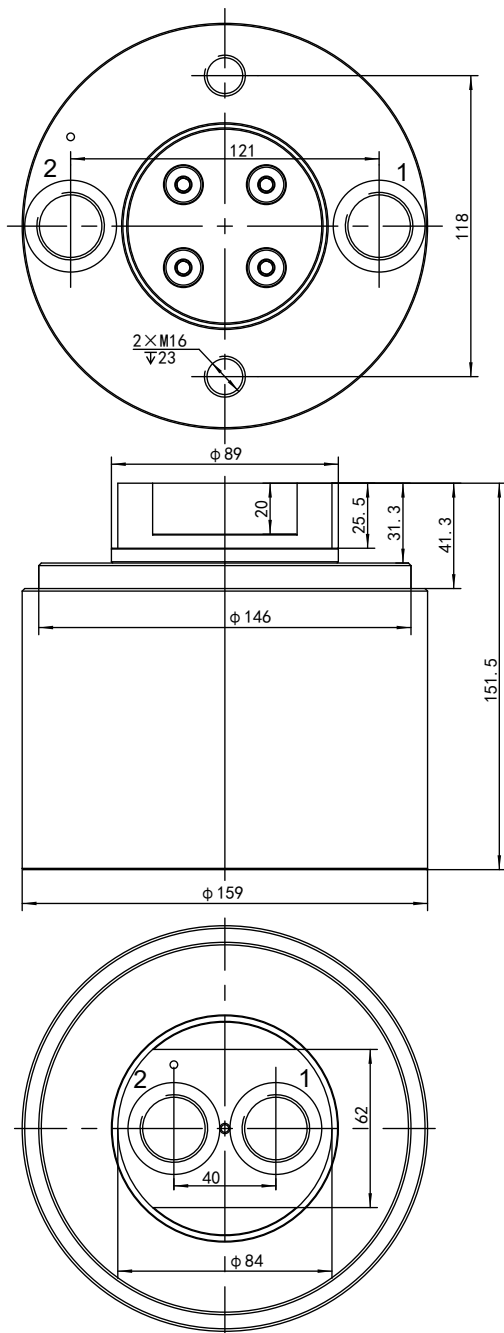


Technical parameters

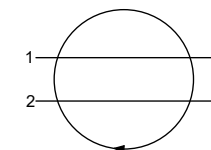
Parameter	Model	RSJ-2-6
Oil port thread		M18×1.5 D=26 L=15
Oil port standard		ISO 9974-1
Max flow		40L/min
Max pressure		32MPa
Diameter		8mm
Rotation ways		2
Starting torque		≤50N.m
Rotation torque		≤30N.m
Rotation speed		≤15r/min
Weight		3.7kg
Operating temperature		-30~100°C
Working medium		46#Anti-wear hydraulic oil
Oil cleanliness		NAS1638 9&ISO4406 20/18/15
Surface protection		Spray painting

Outline drawing

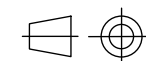
RSJ-2-10



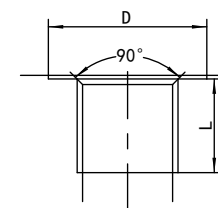
Schematic diagram



View



Port

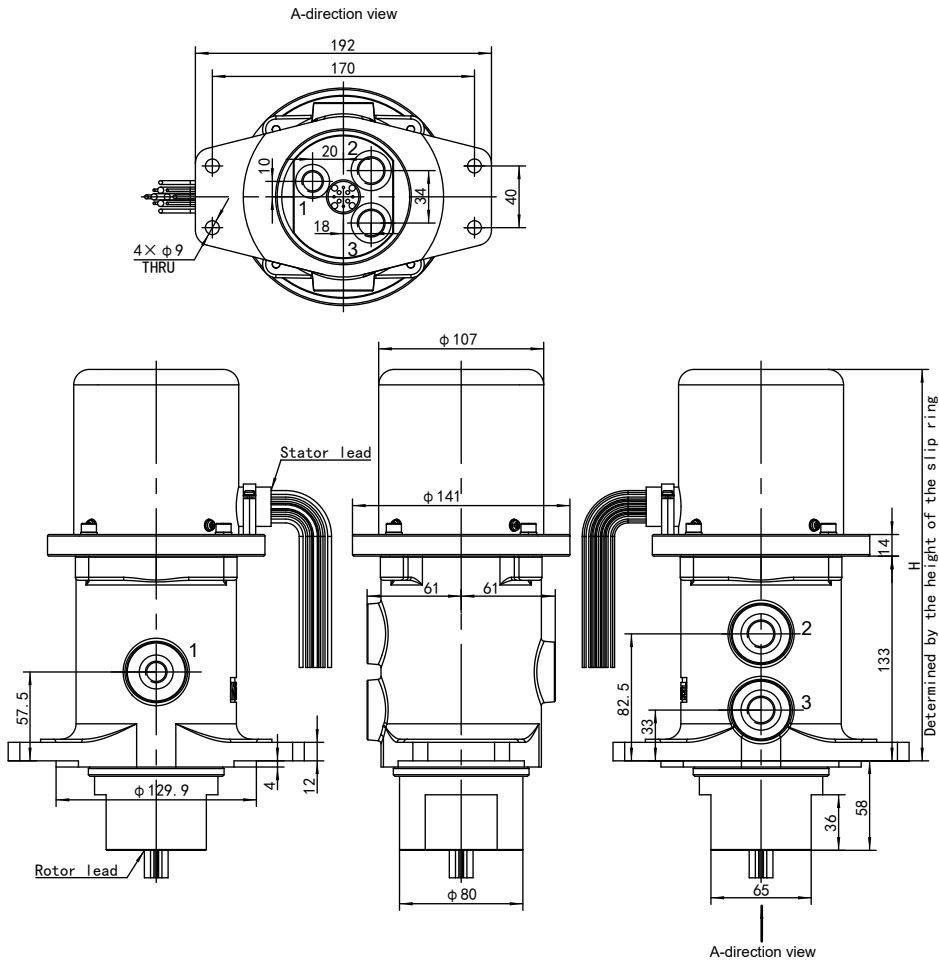


Technical parameters

Parameter	Model	RSJ-2-10
Oil port thread		G3/4 D=36 L=18
Oil port standard		ISO 1179-1
Max flow		150L/min
Max pressure		32MPa
Diameter		18mm
Rotation ways		2
Starting torque		≤100N.m
Rotation torque		≤50N.m
Rotation speed		≤15r/min
Weight		16.5kg
Operating temperature		-30~100°C
Working medium		46#Anti-wear hydraulic oil
Oil cleanliness		NAS1638 9&ISO4406 20/18/15
Surface protection		Spray painting

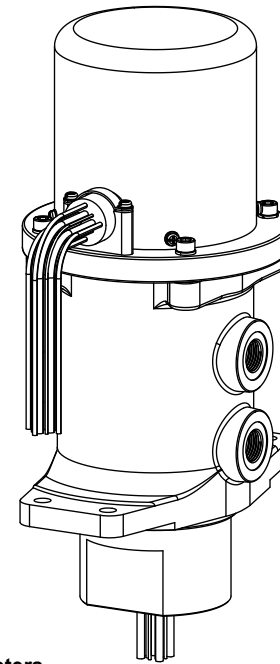
Outline drawing

RSJ-3-3SR*

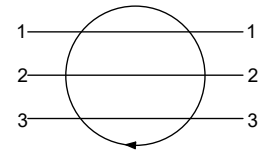


RSJ-3-3SR*

Number of slip ring channels
ex.: 12(12 Channels)



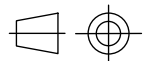
Schematic diagram



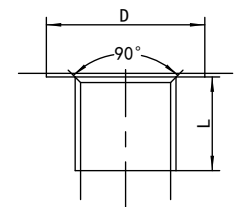
Technical parameters

Parameter	Model	RSJ-3-3SR*
Oil port thread		M14×1.5 D=22 L=13(1)
Oil port thread		M18×1.5 D=22 L=15(2,3)
Oil port standard		ISO 9974-1
Max flow		20L/min(1)&50L/min(2,3)
Max pressure		25MPa
Diameter		8mm
Rotation ways		3
Starting torque		≤100N.m
Rotation torque		≤50N.m
Rotation speed		≤15r/min
Weight		10.2kg(Without slip ring)
Operating temperature		-30~100°C
Working medium		46#Anti-wear hydraulic oil
Oil cleanliness		NAS1638 9&ISO4406 20/18/15
Surface protection		Spray painting

View

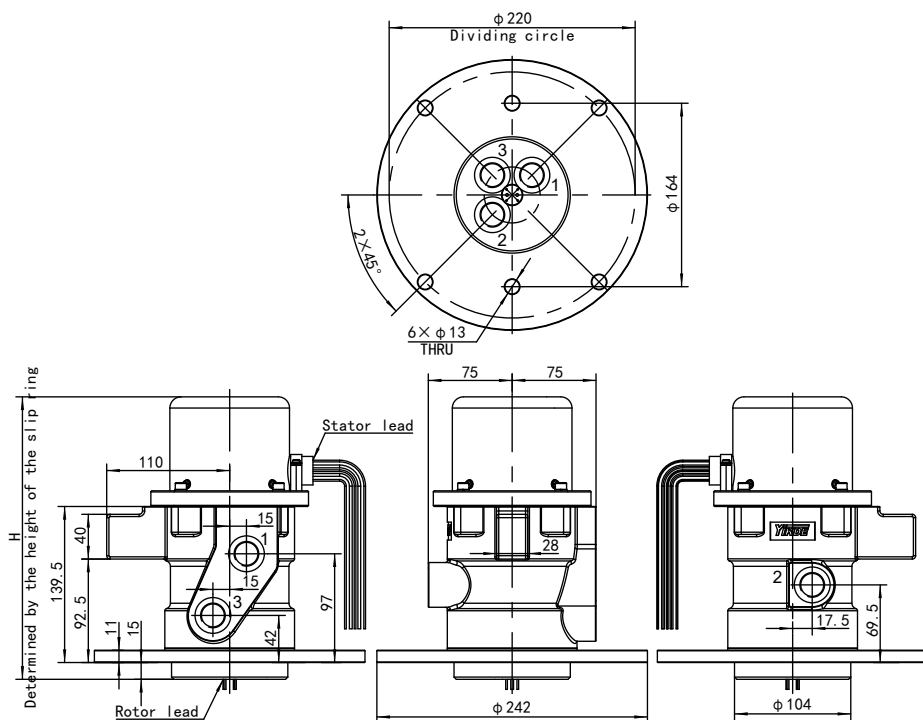


Port



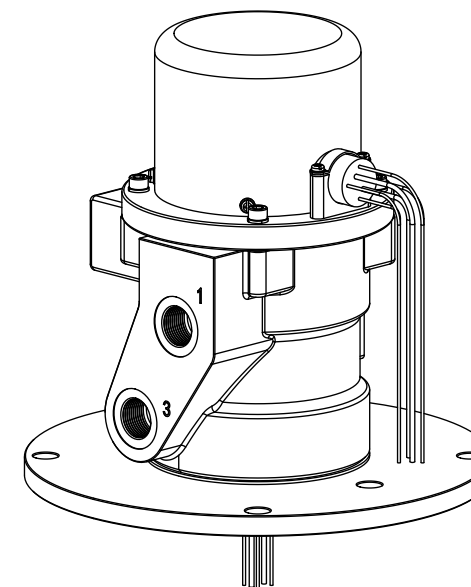
Outline drawing

RSJ-3-5SR*

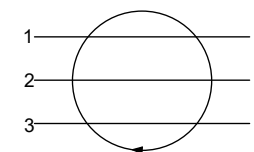


RSJ-3-5SR*

Number of slip ring channels
ex.: 12(12 Channels)



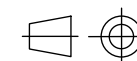
Schematic diagram



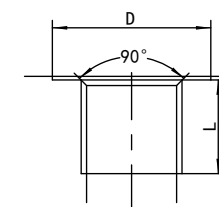
Technical parameters

Parameter	Model	RSJ-3-5SR*
Oil port thread		M22×1.5 D=32 L=16
Oil port standard		ISO 9974-1
Max flow		80L/min
Max pressure		25MPa
Diameter		12mm
Rotation ways		3
Starting torque		≤100N.m
Rotation torque		≤50N.m
Rotation speed		≤15r/min
Weight		14.7kg(Without slip ring)
Operating temperature		-30~100°C
Working medium		46#Anti-wear hydraulic oil
Oil cleanliness		NAS1638 9&ISO4406 20/18/15
Surface protection		Spray painting

View

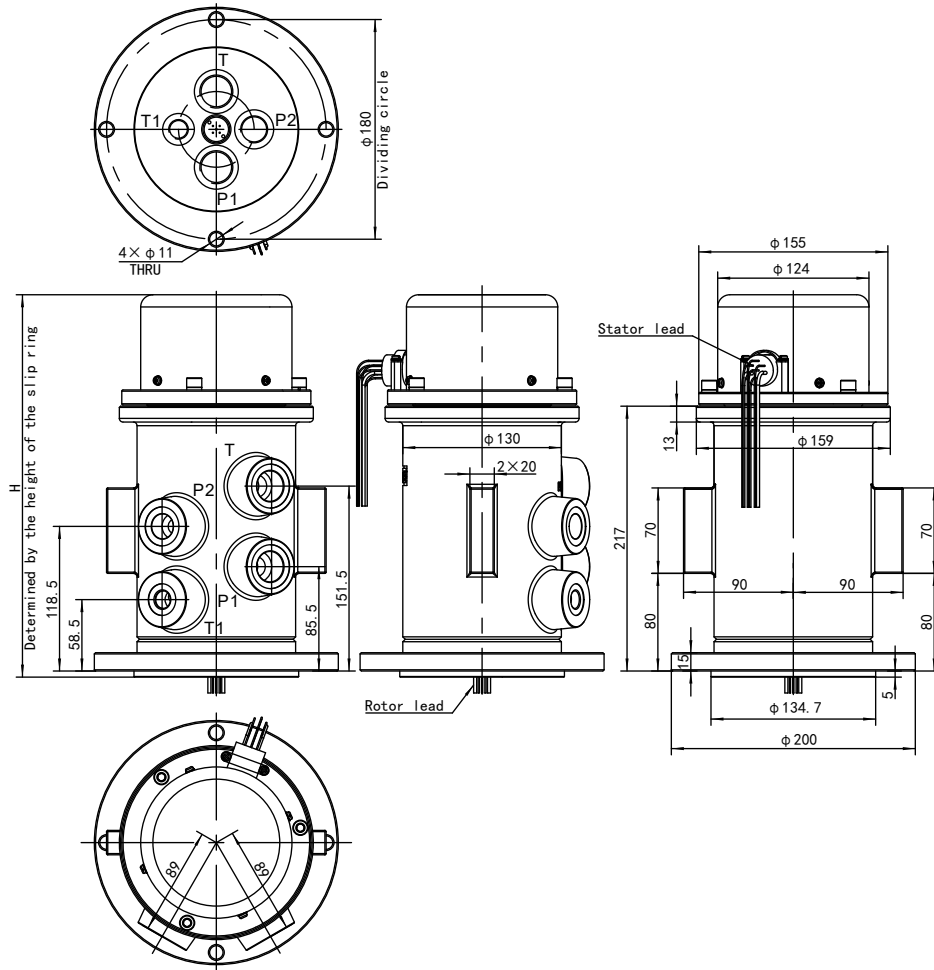


Port



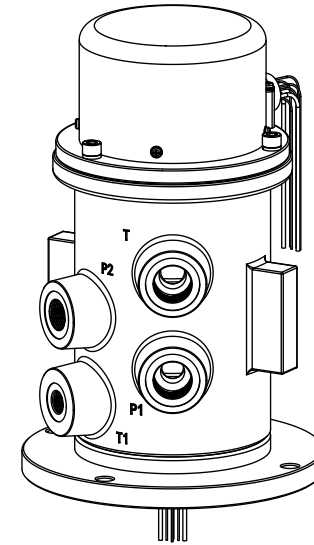
RSJ-4-1SR*

Outline drawing

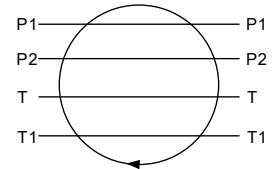


RSJ-4-1SR*

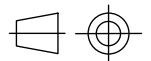
Number of slip ring channels
ex.: 12(12 Channels)



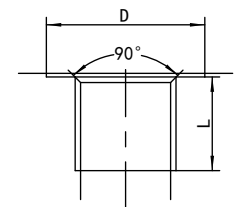
Schematic diagram



View



Port

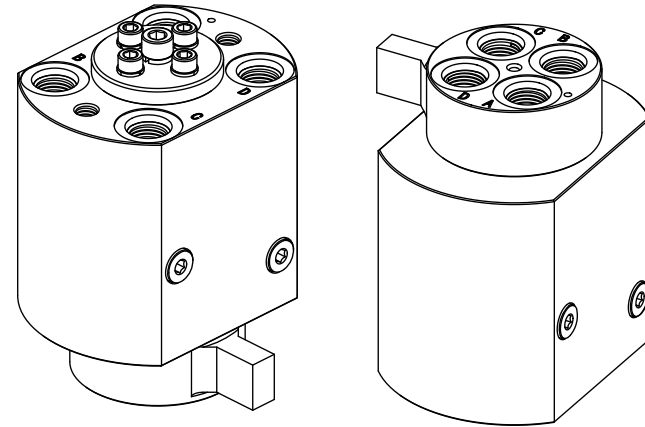
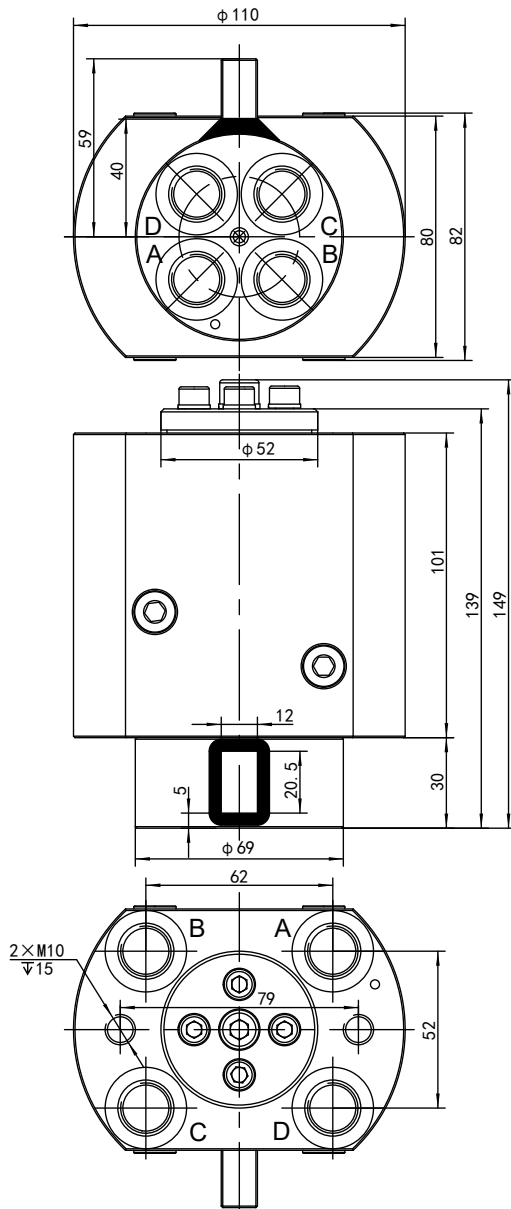


Technical parameters

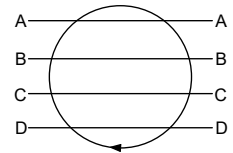
Parameter	Model	RSJ-4-1SR*
Oil port thread		M27×2 D=36 L=18(P1.T)
		M22×1.5 D=32 L=16(P2)
		M16×1.5 D=26 L=15(T1)
Oil port standard		ISO 9974-1
Max flow		120L/min(P1.T)&60L/min(P2)&40L/min(T1)
Max pressure		32MPa(P1.P2)&5MPa(T.T1)
Diameter		16mm(P1)&12mm(P2)&18mm(T)&8mm(T1)
Rotation ways		4
Starting torque		≤180N.m
Rotation torque		≤140N.m
Rotation speed		≤15r/min
Weight		23.8kg(Without slip ring)
Operating temperature		-30~100°C
Working medium		46#Anti-wear hydraulic oil
Oil cleanliness		NAS1638 9&ISO4406 20/18/15
Surface protection		Spray painting

Outline drawing

RSJ-4-2



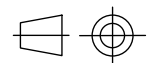
Schematic diagram



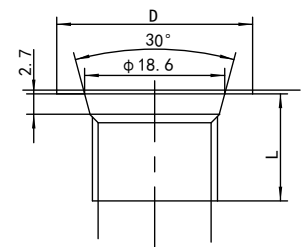
Technical parameters

Parameter	Model	RSJ-4-2
Oil port thread		G3/8 D=26 L=14
Oil port standard		JIS B 2351
Max flow		40L/min
Max pressure		25MPa
Diameter		8mm
Rotation ways		4
Starting torque		≤100N.m
Rotation torque		≤50N.m
Rotation speed		≤15r/min
Weight		6.1kg
Operating temperature		-30~100°C
Working medium		46#Anti-wear hydraulic oil
Oil cleanliness		NAS1638 9&ISO4406 20/18/15
Surface protection		Spray painting

View

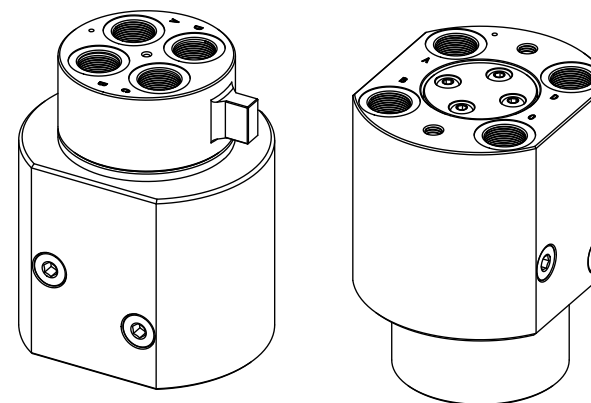
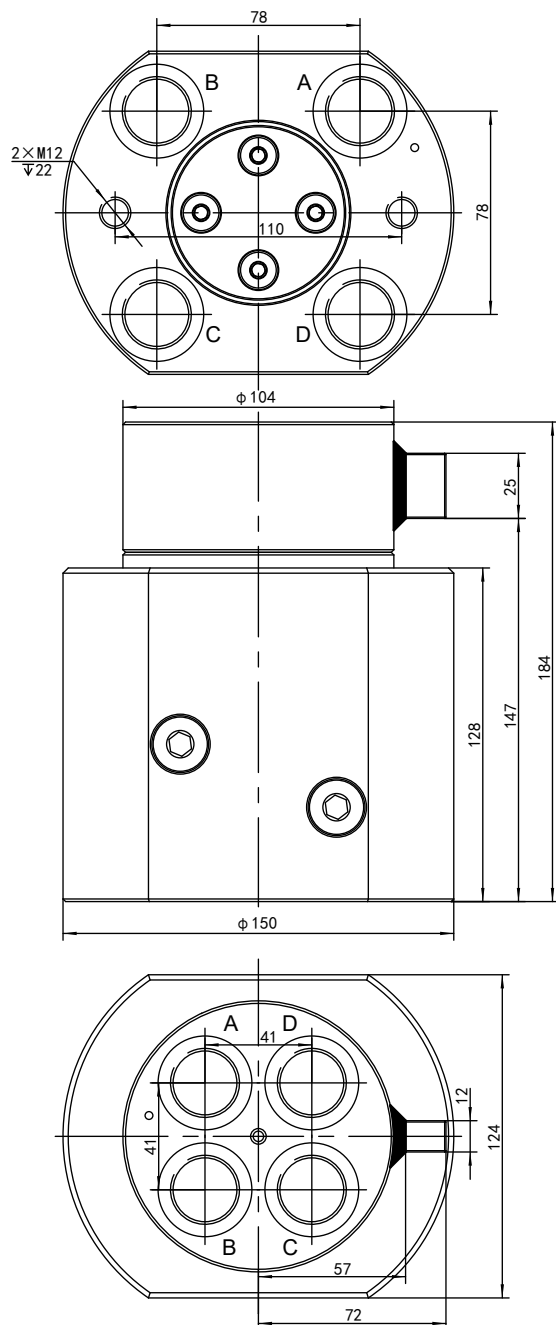


Port

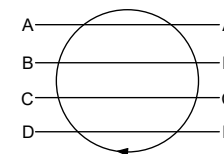


Outline drawing

RSJ-4-3



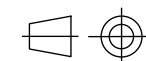
Schematic diagram



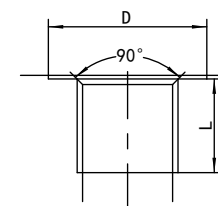
Technical parameters

Parameter	Model	RSJ-4-3
Oil port thread		G3/4 D=36 L=18
Oil port standard		ISO 1179-1
Max flow		80L/min
Max pressure		25MPa
Diameter		12mm
Rotation ways		4
Starting torque		≤100N.m
Rotation torque		≤50N.m
Rotation speed		≤15r/min
Weight		16.2kg
Operating temperature		-30~100°C
Working medium		46#Anti-wear hydraulic oil
Oil cleanliness		NAS1638 9&ISO4406 20/18/15
Surface protection		Spray painting

View

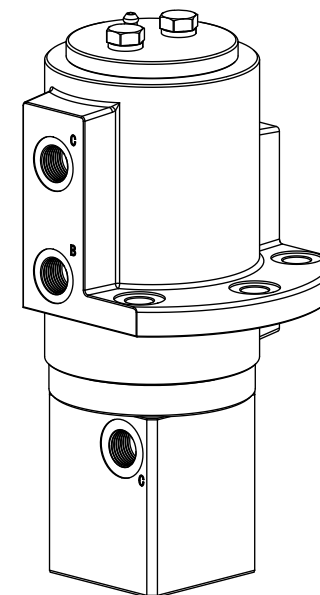
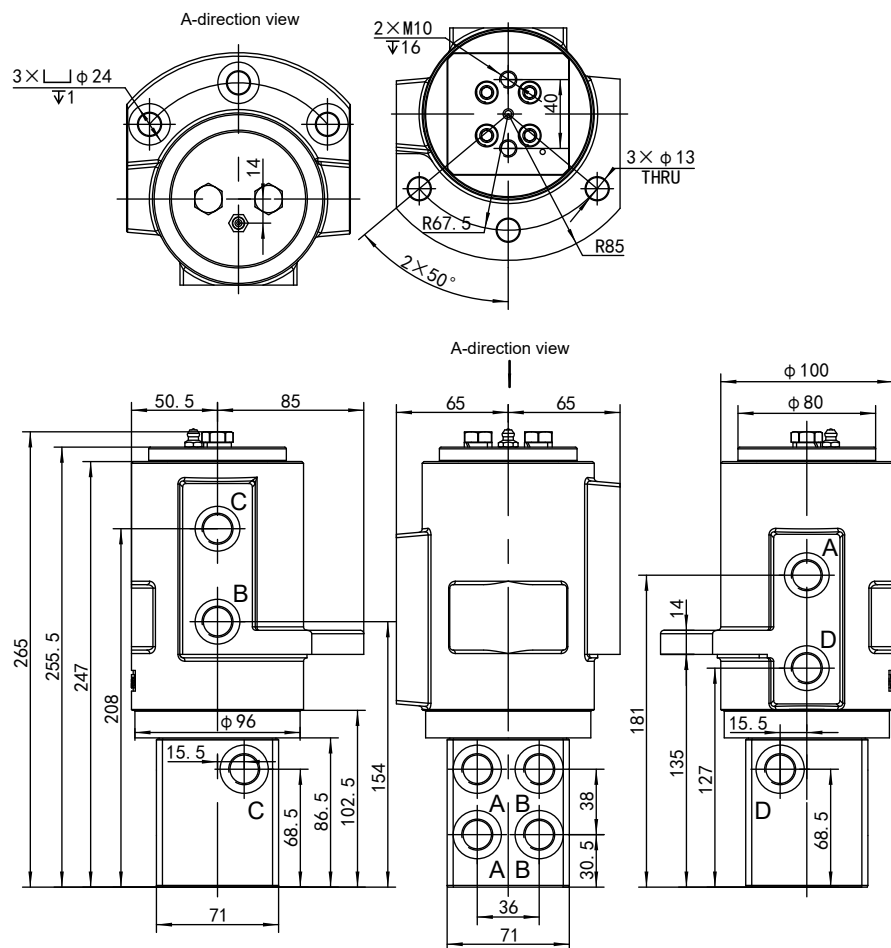


Port

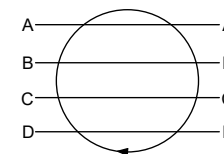


Outline drawing

RSJ-4-4



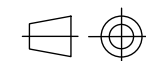
Schematic diagram



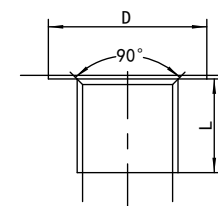
Technical parameters

Parameter	Model	RSJ-4-4
Oil port thread		M18×1.5 D=26 L=15
Oil port standard		ISO 9974-1
Max flow		40L/min
Max pressure		25MPa
Diameter		8mm
Rotation ways		4
Starting torque		≤120N.m
Rotation torque		≤80N.m
Rotation speed		≤15r/min
Weight		13kg
Operating temperature		-30~100°C
Working medium		46#Anti-wear hydraulic oil
Oil cleanliness		NAS1638 9&ISO4406 20/18/15
Surface protection		Spray painting

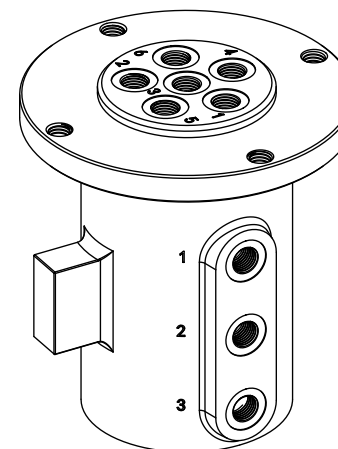
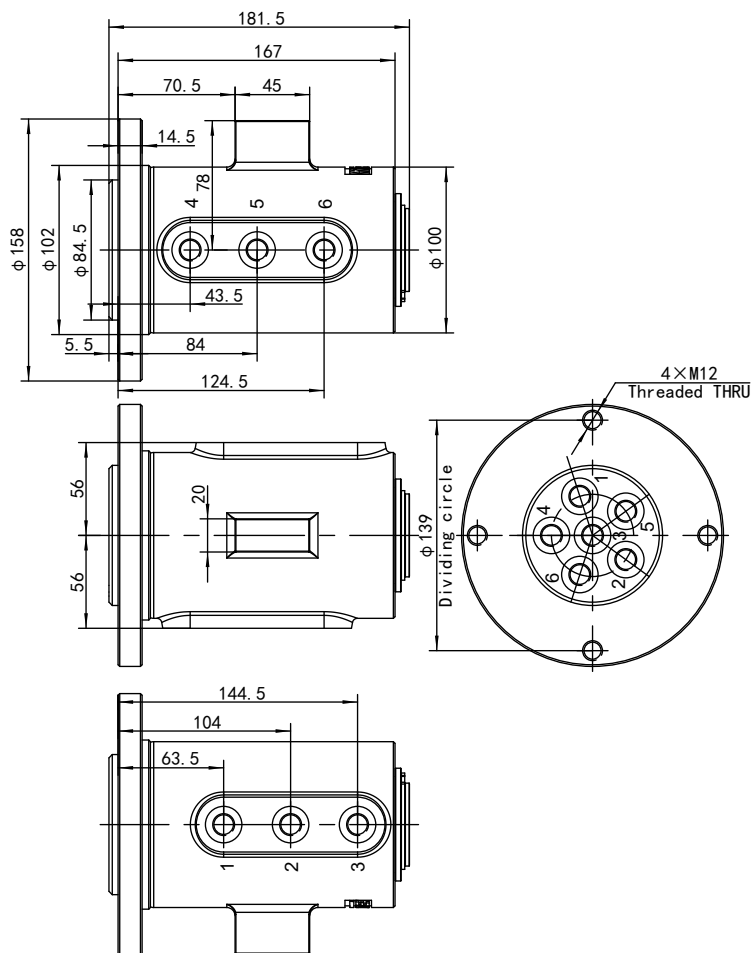
View



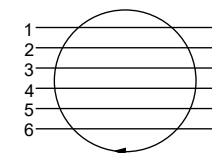
Port



Outline drawing **RSJ-6-1N**



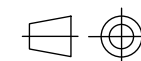
Schematic diagram



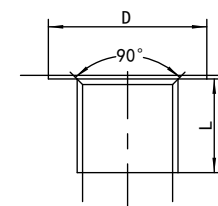
Technical parameters

Parameter	Model	RSJ-6-1N
Oil port thread		M14×1.5 D=22 L=13
Oil port standard		ISO 9974-1
Max flow		25L/min
Max pressure		25MPa
Diameter		6mm
Rotation ways		6
Starting torque		≤120N.m
Rotation torque		≤80N.m
Rotation speed		≤15r/min
Weight		11.3kg
Operating temperature		-30~100℃
Working medium		46#Anti-wear hydraulic oil
Oil cleanliness		NAS1638 9&ISO4406 20/18/15
Surface protection		Spray painting

View

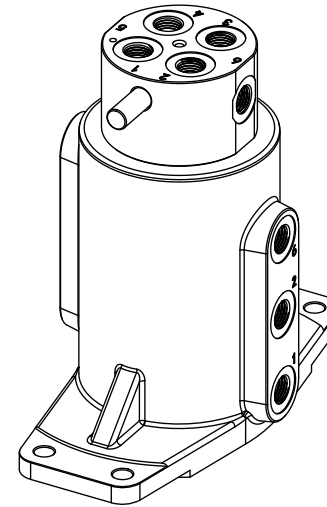
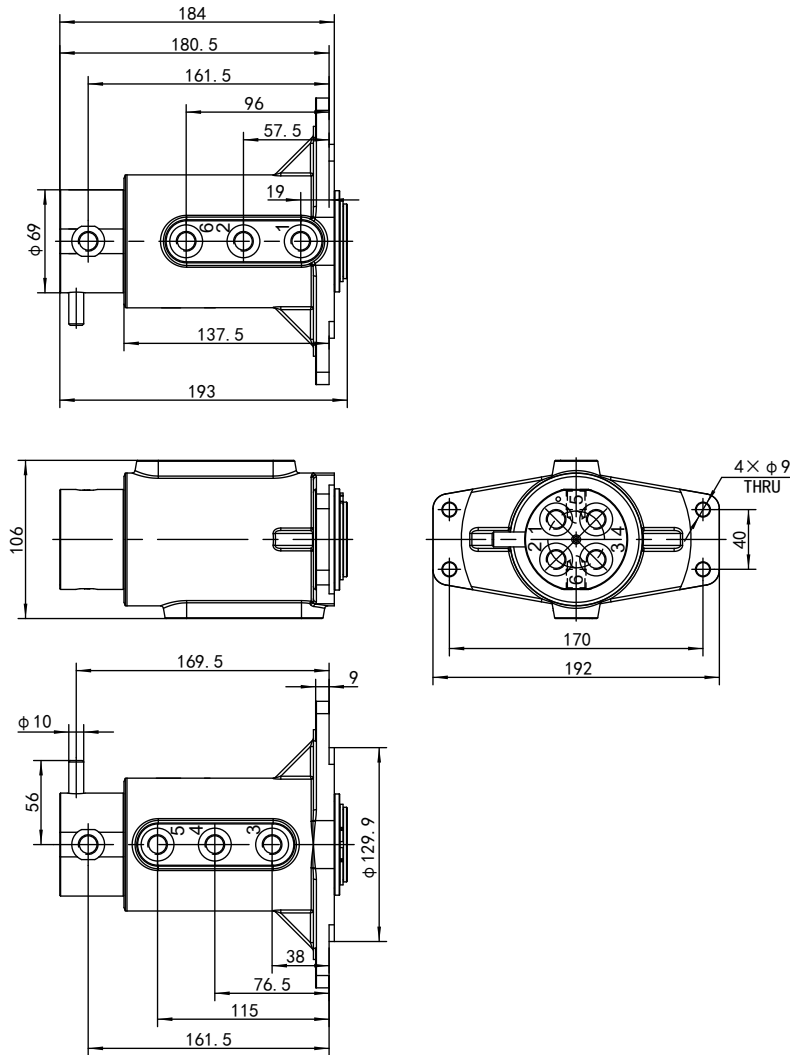


Port

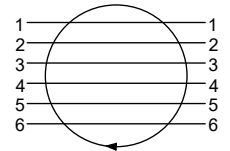


Outline drawing

RSJ-6-3A



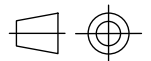
Schematic diagram



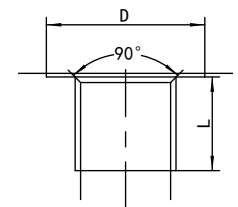
Technical parameters

Parameter	Model	RSJ-6-3A
Oil port thread		G1/4 D=22 L=13
Oil port standard		ISO 1179-1
Max flow		25L/min
Max pressure		25MPa
Diameter		6mm
Rotation ways		6
Starting torque		≤120N.m
Rotation torque		≤80N.m
Rotation speed		≤15r/min
Weight		8kg
Operating temperature		-30~100°C
Working medium		46#Anti-wear hydraulic oil
Oil cleanliness		NAS1638 9&ISO4406 20/18/15
Surface protection		Spray painting

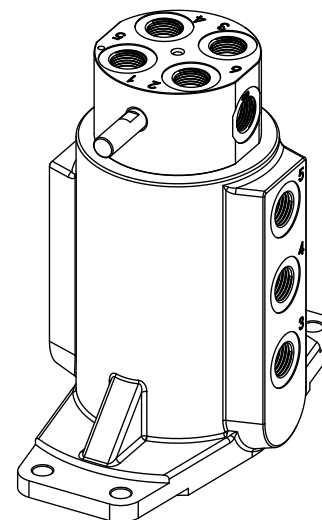
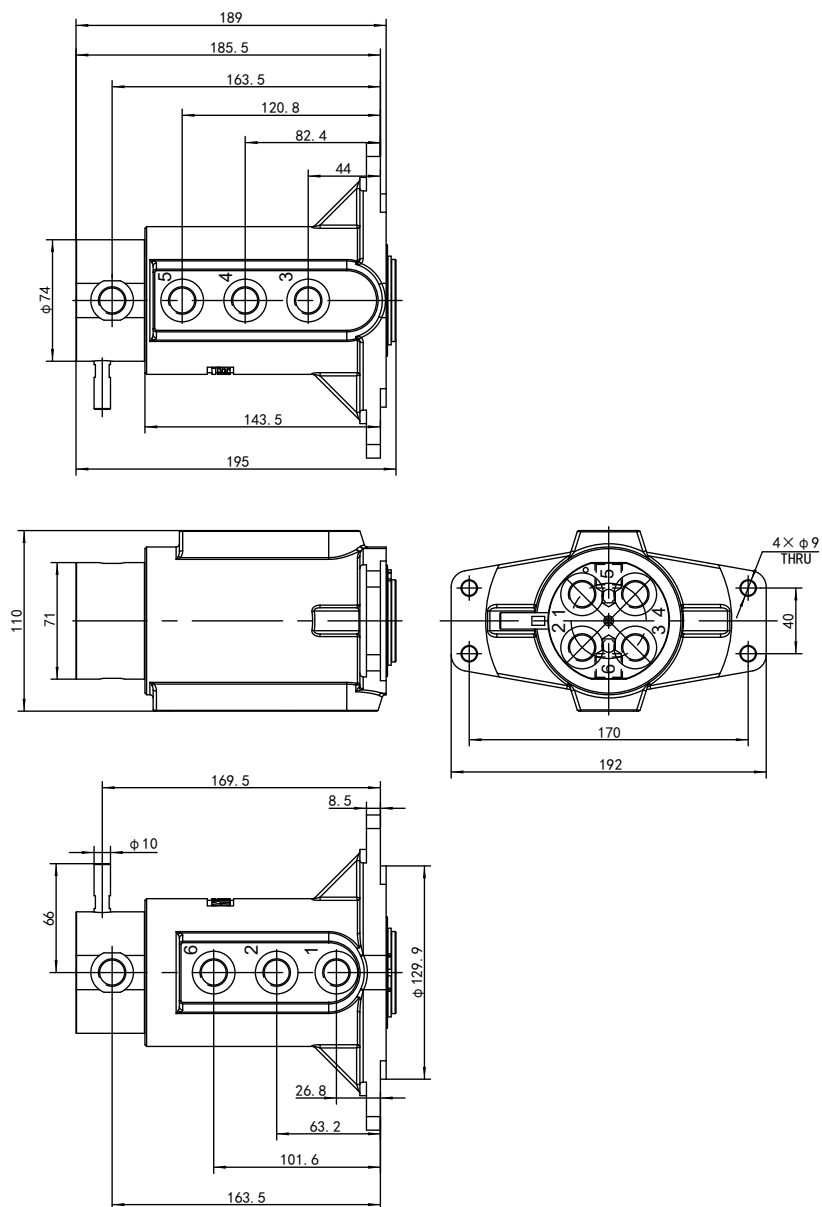
View



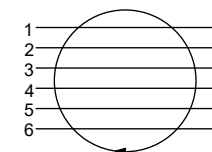
Port



Outline drawing **RSJ-6-4N**



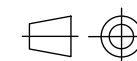
Schematic diagram



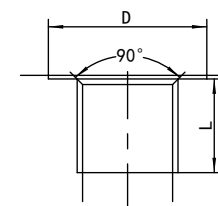
Technical parameters

Parameter	Model	RSJ-6-4N
Oil port thread		G3/8 D=26 L=13
Oil port standard		ISO 1179-1
Max flow		45L/min
Max pressure		25MPa
Diameter		8mm
Rotation ways		6
Starting torque		≤120N.m
Rotation torque		≤80N.m
Rotation speed		≤15r/min
Weight		8.8kg
Operating temperature		-30~100°C
Working medium		46#Anti-wear hydraulic oil
Oil cleanliness		NAS1638 9&ISO4406 20/18/15
Surface protection		Spray painting

View

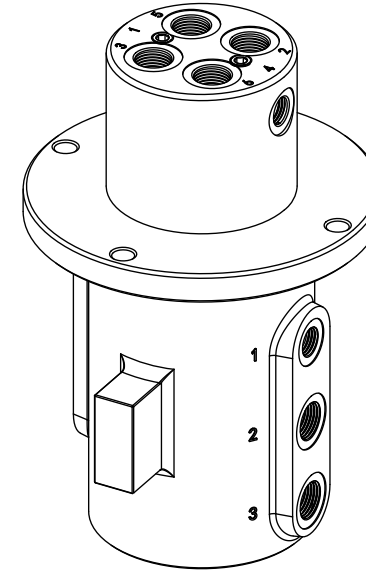
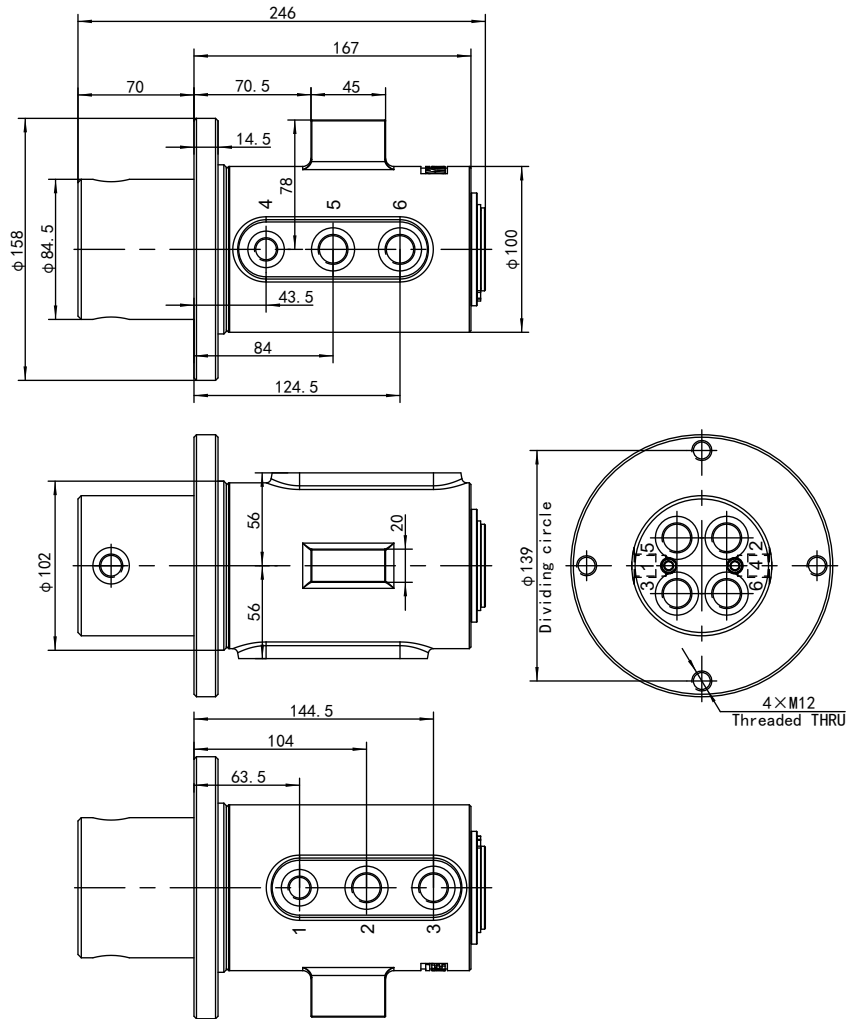


Port

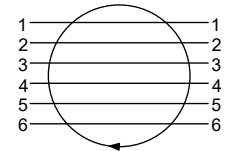


RSJ-6-10

Outline drawing



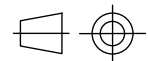
Schematic diagram



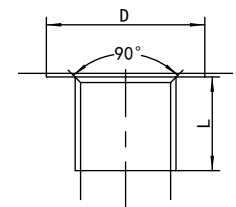
Technical parameters

Parameter	Model	RSJ-6-10
Oil port thread		M14×1.5 D=22 L=13(1.4)
		M18×1.5 D=26 L=14(2.3.5.6)
Oil port standard		ISO 9974-1
Max flow		25L/min(1.4)&40L/min(2.3.5.6)
Max pressure		25MPa
Diameter		6mm(1.4)&8mm(2.3.5.6)
Rotation ways		6
Starting torque		≤120N.m
Rotation torque		≤80N.m
Rotation speed		≤15r/min
Weight		13kg
Operating temperature		-30~100℃
Working medium		46#Anti-wear hydraulic oil
Oil cleanliness		NAS1638 9&ISO4406 20/18/15
Surface protection		Spray painting

View

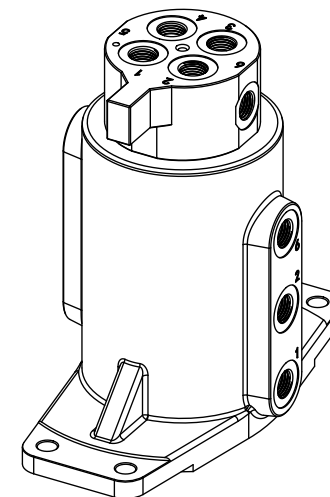
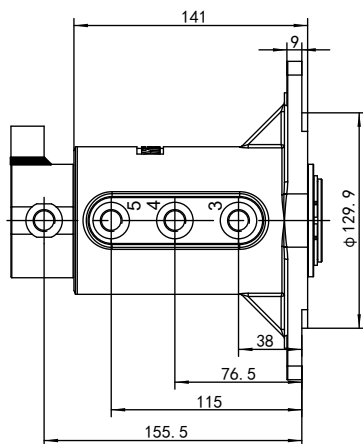
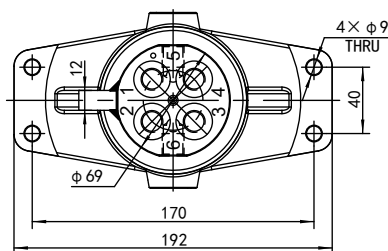
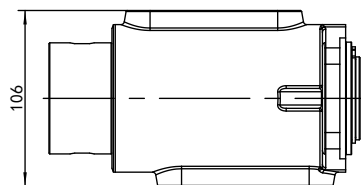
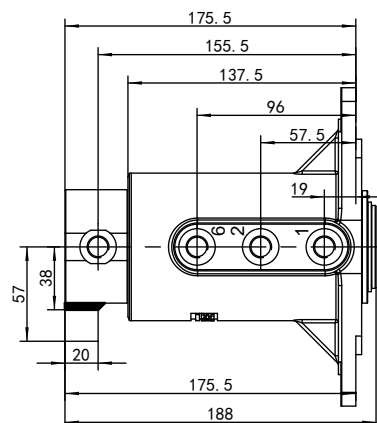


Port

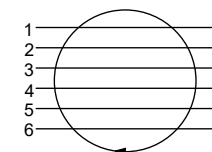


RSJ-6-12A

Outline drawing



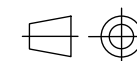
Schematic diagram



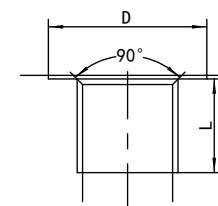
Technical parameters

Parameter	Model	RSJ-6-12A
Oil port thread		G1/4 D=22 L=13
Oil port standard		ISO 1179-1
Max flow		25L/min
Max pressure		25MPa
Diameter		6mm
Rotation ways		6
Starting torque		≤120N.m
Rotation torque		≤80N.m
Rotation speed		≤15r/min
Weight		7.9kg
Operating temperature		-30~100°C
Working medium		46#Anti-wear hydraulic oil
Oil cleanliness		NAS1638 9&ISO4406 20/18/15
Surface protection		Spray painting

View

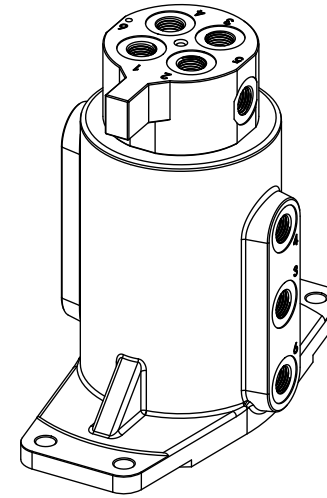
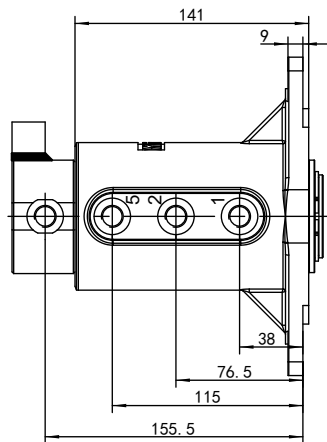
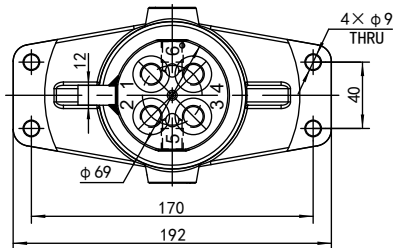
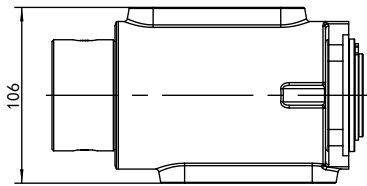
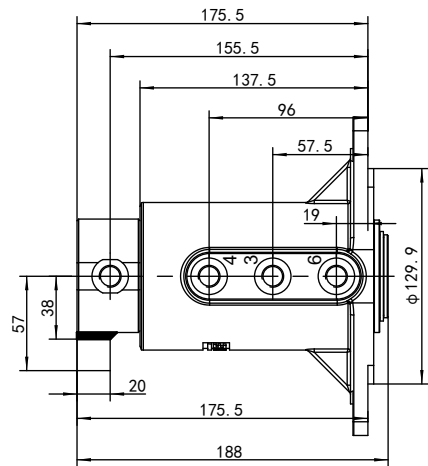


Port

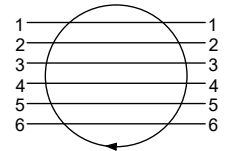


RSJ-6-14A

Outline drawing



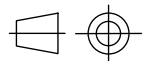
Schematic diagram



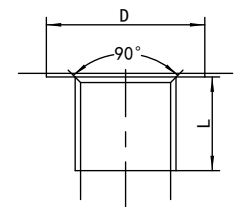
Technical parameters

Parameter	Model	RSJ-6-14A
Oil port thread		G1/4 D=22 L=13
Oil port standard		ISO 1179-1
Max flow		25L/min
Max pressure		25MPa
Diameter		6mm
Rotation ways		6
Starting torque		≤120N.m
Rotation torque		≤80N.m
Rotation speed		≤15r/min
Weight		7.9kg
Operating temperature		-30~100°C
Working medium		46#Anti-wear hydraulic oil
Oil cleanliness		NAS1638 9&ISO4406 20/18/15
Surface protection		Spray painting

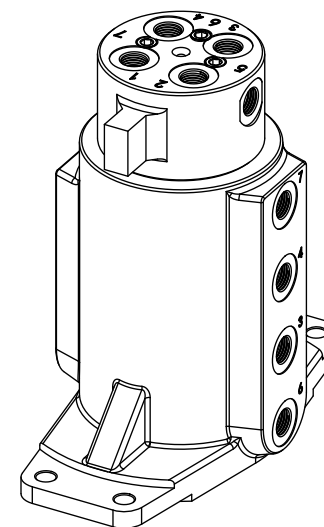
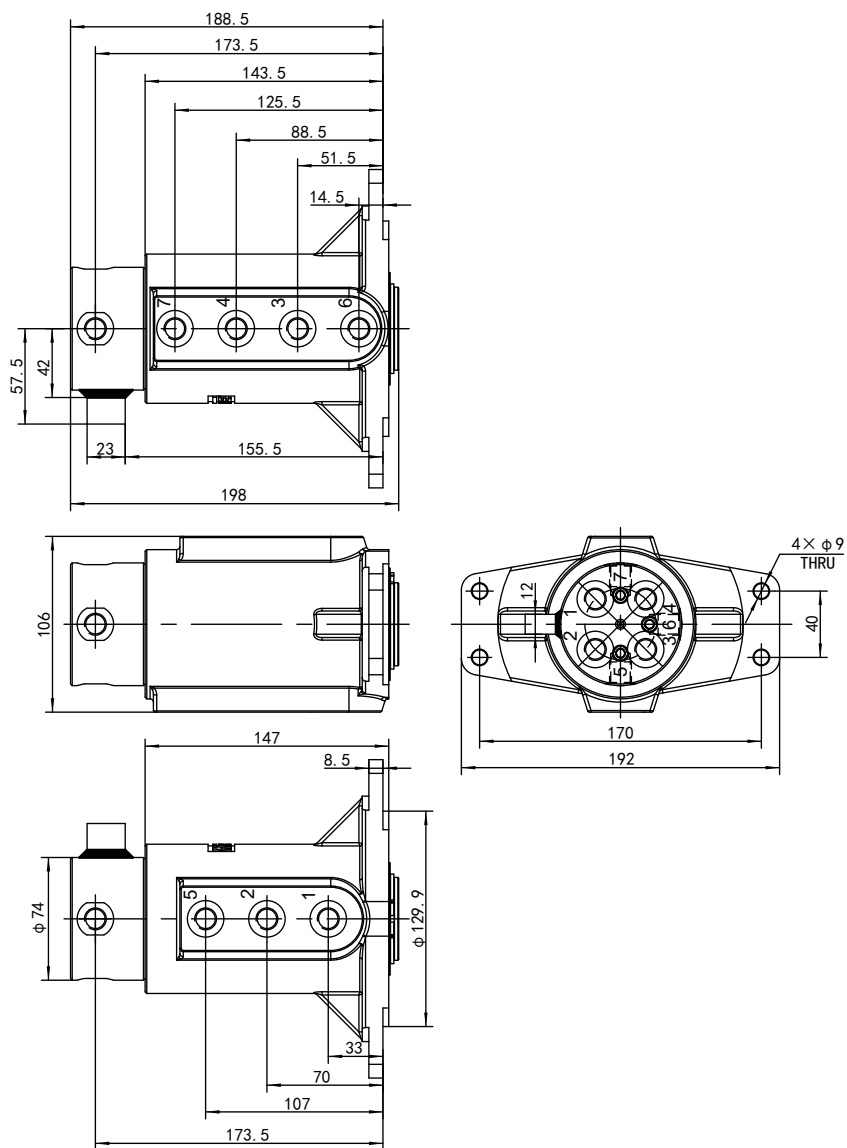
View



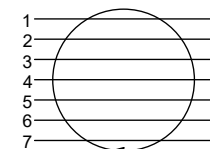
Port



Outline drawing **RSJ-7-1A**



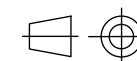
Schematic diagram



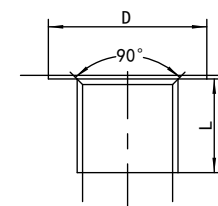
Technical parameters

Parameter	Model	RSJ-7-1A
Oil port thread		G1/4 D=22 L=13
Oil port standard		ISO 1179-1
Max flow		25L/min
Max pressure		25MPa
Diameter		6mm
Rotation ways		7
Starting torque		≤120N.m
Rotation torque		≤80N.m
Rotation speed		≤15r/min
Weight		9kg
Operating temperature		-30~100°C
Working medium		46#Anti-wear hydraulic oil
Oil cleanliness		NAS1638 9&ISO4406 20/18/15
Surface protection		Spray painting

View

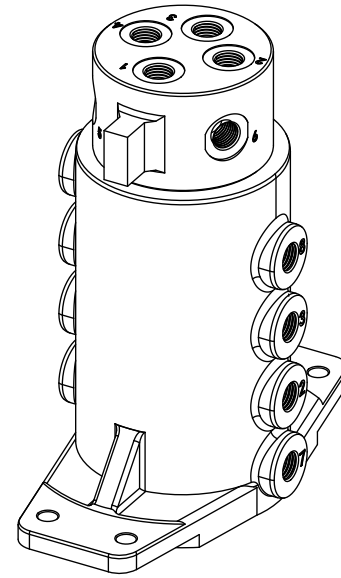
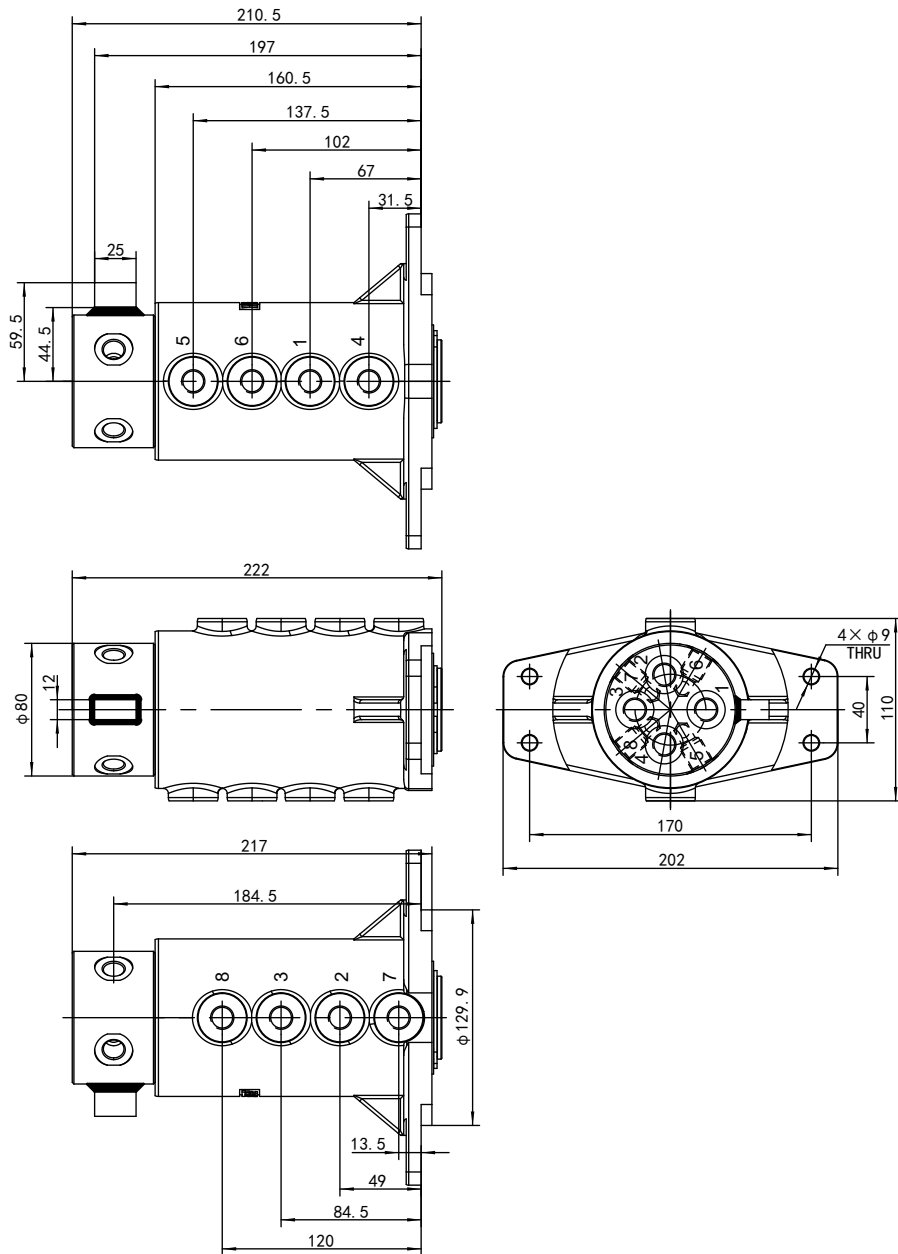


Port

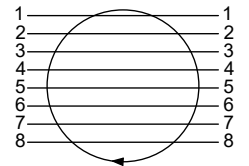


RSJ-8-1B

Outline drawing



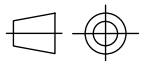
Schematic diagram



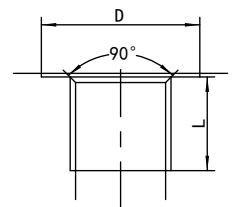
Technical parameters

Parameter	Model	RSJ-8-1B
Oil port thread		M14×1.5 D=22 L=13
Oil port standard		ISO 9974-1
Max flow		25L/min
Max pressure		25MPa
Diameter		6mm
Rotation ways		8
Starting torque		≤120N.m
Rotation torque		≤80N.m
Rotation speed		≤15r/min
Weight		10.4kg
Operating temperature		-30~100°C
Working medium		46#Anti-wear hydraulic oil
Oil cleanliness		NAS1638 9&ISO4406 20/18/15
Surface protection		Spray painting

View

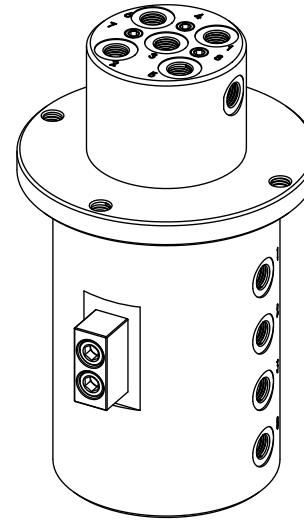
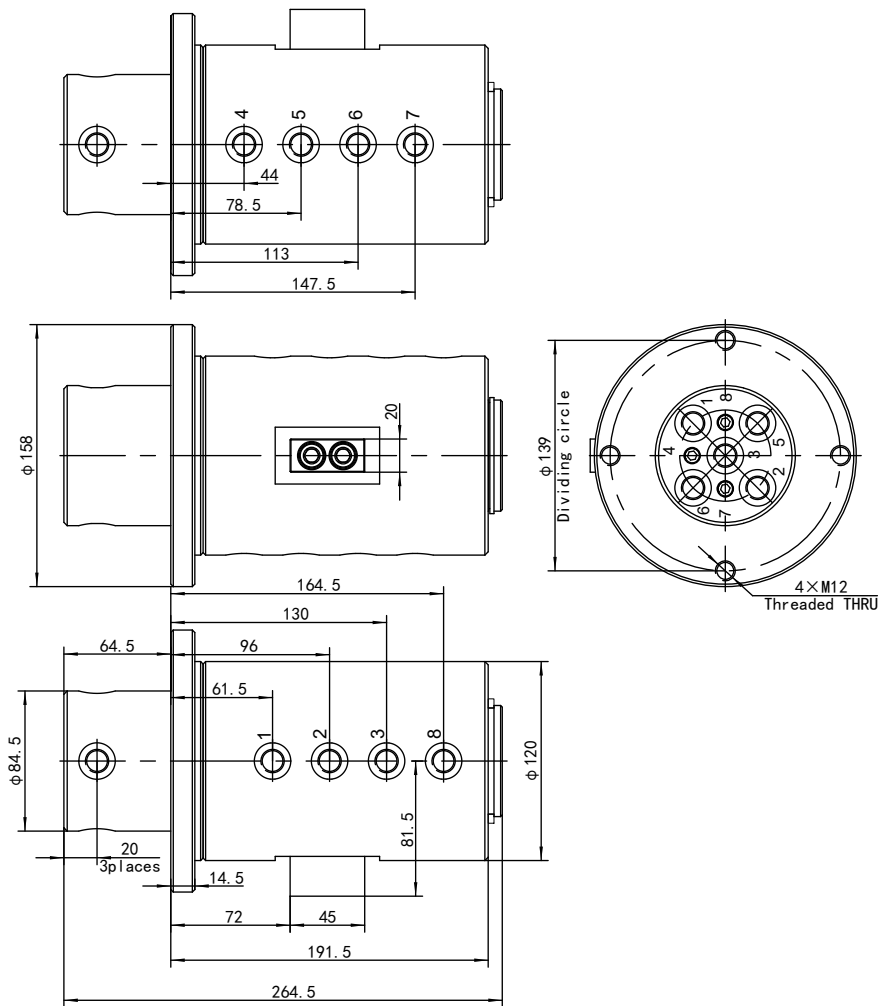


Port

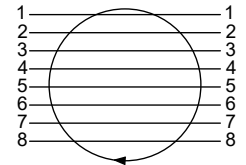


RSJ-8-4

Outline drawing



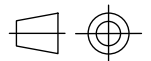
Schematic diagram



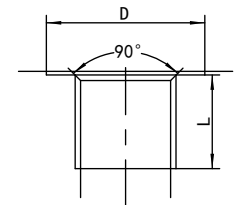
Technical parameters

Parameter	Model	RSJ-8-4
Oil port thread		M14×1.5 D=22 L=13
Oil port standard		ISO 9974-1
Max flow		25L/min
Max pressure		25MPa
Diameter		6mm
Rotation ways		8
Starting torque		≤120N.m
Rotation torque		≤80N.m
Rotation speed		≤15r/min
Weight		18.4kg
Operating temperature		-30~100°C
Working medium		46#Anti-wear hydraulic oil
Oil cleanliness		NAS1638 9&ISO4406 20/18/15
Surface protection		Spray painting

View

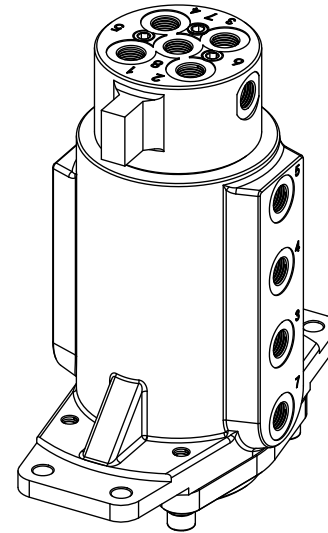
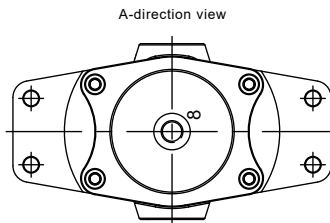
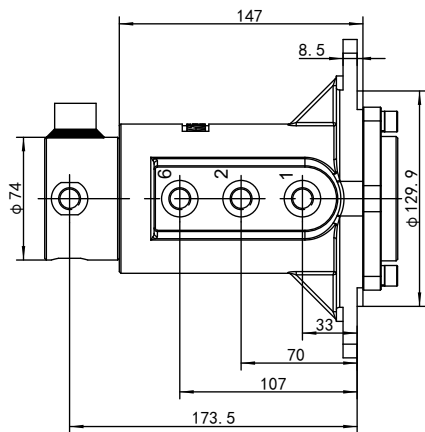
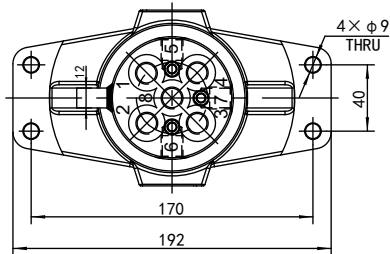
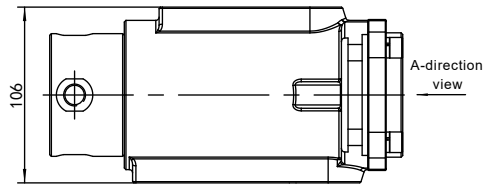
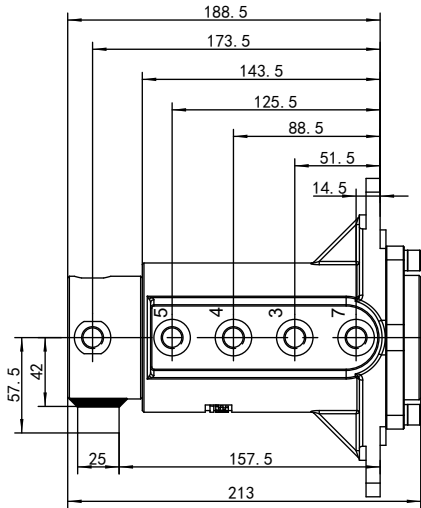


Port

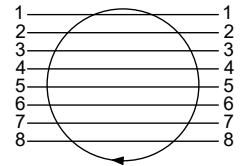


RSJ-8-5

Outline drawing



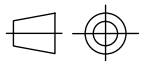
Schematic diagram



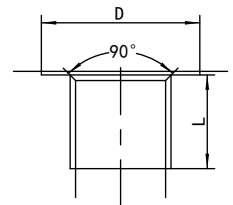
Technical parameters

Parameter	Model	RSJ-8-5
Oil port thread		G1/4 D=22 L=13
Oil port standard		ISO 1179-1
Max flow		25L/min
Max pressure		25MPa(1~7)&0.5MPa(8)
Diameter		6mm
Rotation ways		8
Starting torque		≤120N.m
Rotation torque		≤80N.m
Rotation speed		≤15r/min
Weight		9.7kg
Operating temperature		-30~100°C
Working medium		46#Anti-wear hydraulic oil
Oil cleanliness		NAS1638 9&ISO4406 20/18/15
Surface protection		Spray painting

View

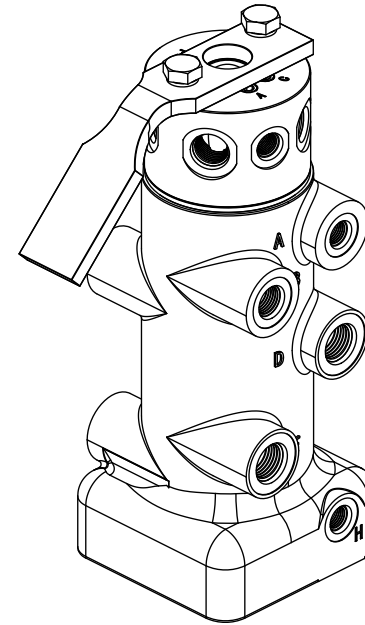
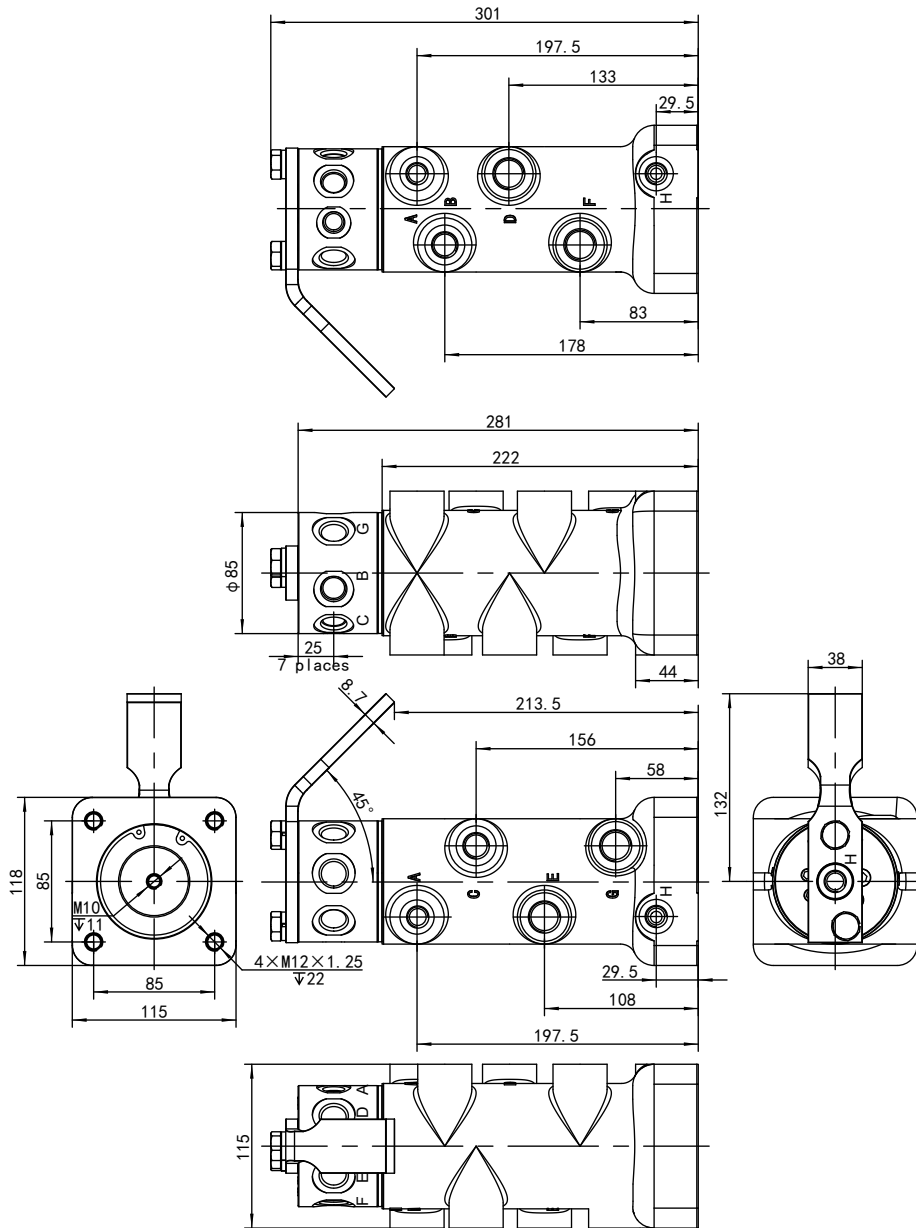


Port

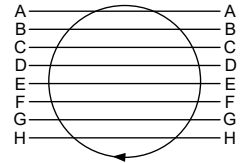


Outline drawing

RSJ-8-7



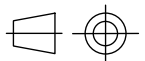
Schematic diagram



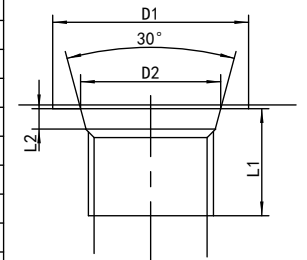
Technical parameters

Parameter	Model	RSJ-8-7
Oil port thread		G1/4 D1=24 L1=13 D2=15.6 L2=2.5(A.H)
		G3/8 D1=28 L1=15 D2=18.6 L2=2.5(B.C)
		3/4-16UNF D1=30 L1=16 D2=20.65 L2=2.5(D.E.F.G/Rotary axis)
		G1/2 D1=34 L1=16 D2=22.6 L2=2.5(D.E.F.G/Rotary body)
Oil port standard		JIS B 2351&ISO 11926-1
Max flow		20L/min(A.H)&40L/min(B.C)&80L/min(D.E.F.G)
Max pressure		25MPa(A.B.C.D.E.F.G)&0.5MPa(H)
Diameter		6mm(A.H)&8mm(B.C)&12mm(D.E.F.G)
Rotation ways		8
Starting torque		≤180N.m
Rotation torque		≤140N.m
Rotation speed		≤15r/min
Weight		14.5kg
Operating temperature		-30~100°C
Working medium		46#Anti-wear hydraulic oil
Oil cleanliness		NAS1638 9&ISO4406 20/18/15
Surface protection		Spray painting

View

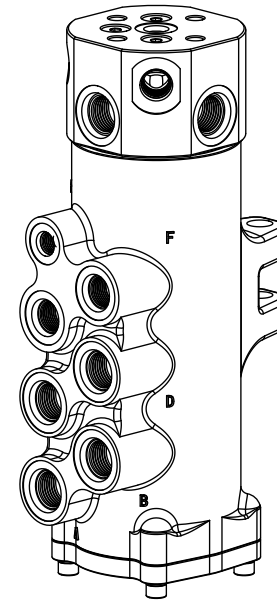
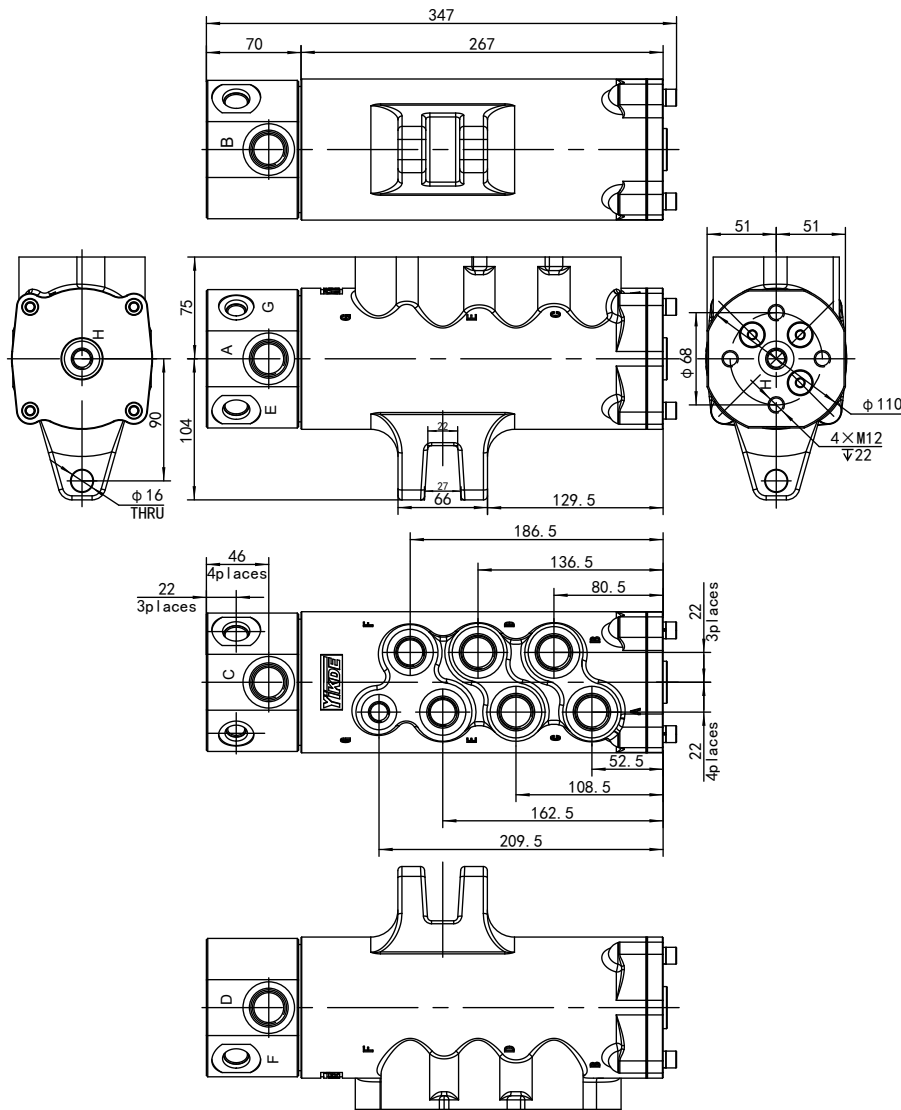


Port

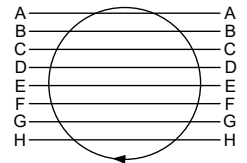


Outline drawing

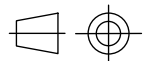
RSJ-8-8



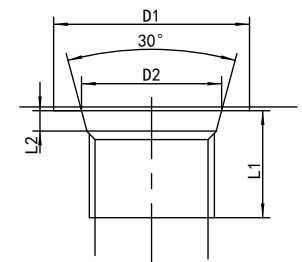
Schematic diagram



View



Port

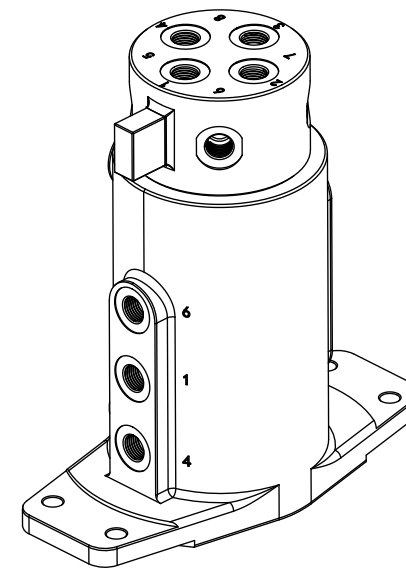
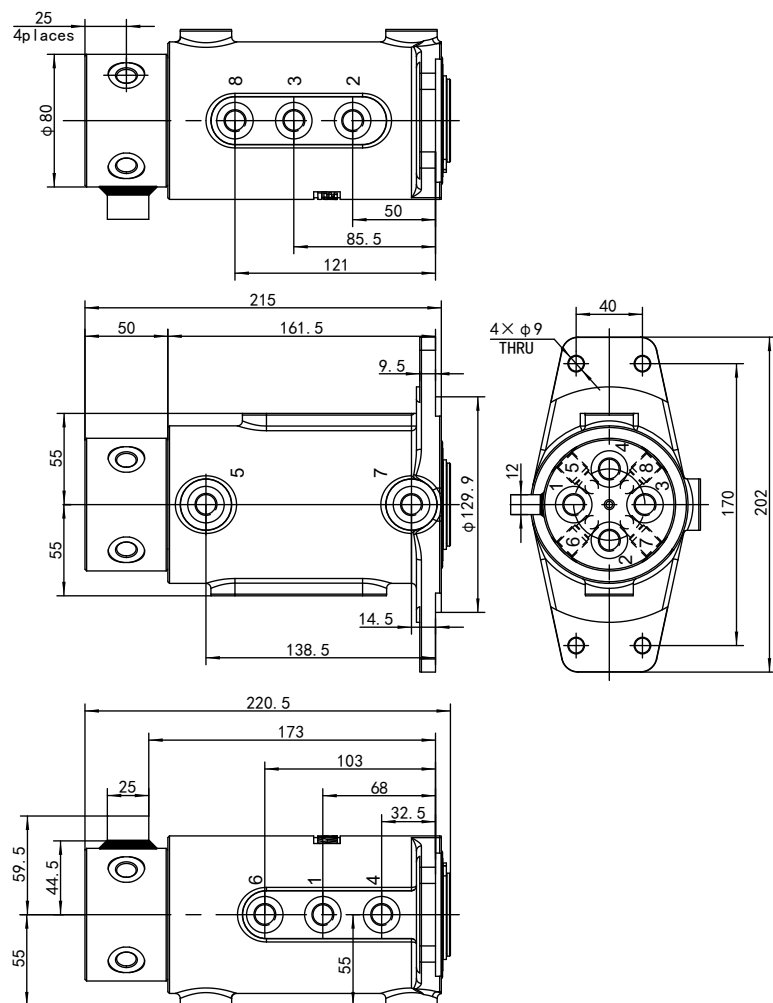


Technical parameters

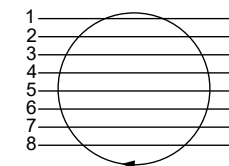
Parameter	Model	RSJ-8-8
Oil port thread		M24×1.5 D1=38 L1=20 D2=27.6 L2=2.8(A.B.C.D)
		M18×1.5 D1=36 L1=20 D2=19.8 L2=2.8(E.F/Rotary axis)
		M20×1.5 D1=35 L1=20 D2=23.2 L2=2.8(E.F/Rotary body)
Oil port standard		M14×1.5 D1=24 L1=20 D2=15.8 L2=2.8(G.H)
Max flow		ISO 6149-1
Max pressure		89L/min(A.B.C.D)&62L/min(E.F)&5L/min(G.H)
Diameter		31.5MPa(A.B.C.D.E.F)&7.5MPa(G)&0.5MPa(H)
Rotation ways		12mm(A.B.C.D)&10mm(E.F)&6mm(G.H)
Starting torque		8
Rotation torque		≤180N.m
Rotation speed		≤140N.m
Weight		≤15r/min
Operating temperature		21.6kg
Working medium		-30~100°C
Oil cleanliness		46#Anti-wear hydraulic oil
Surface protection		NAS1638 9&ISO4406 20/18/15
		Spray painting

RSJ-8-9

Outline drawing



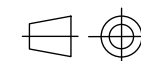
Schematic diagram



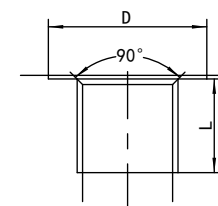
Technical parameters

Parameter	Model	RSJ-8-9
Oil port thread		G1/4 D=22 L=13
Oil port standard		ISO 1179-1
Max flow		25L/min
Max pressure		25MPa
Diameter		6mm
Rotation ways		8
Starting torque		≤120N.m
Rotation torque		≤80N.m
Rotation speed		≤15r/min
Weight		10.3kg
Operating temperature		-30~100°C
Working medium		46#Anti-wear hydraulic oil
Oil cleanliness		NAS1638 9&ISO4406 20/18/15
Surface protection		Spray painting

View

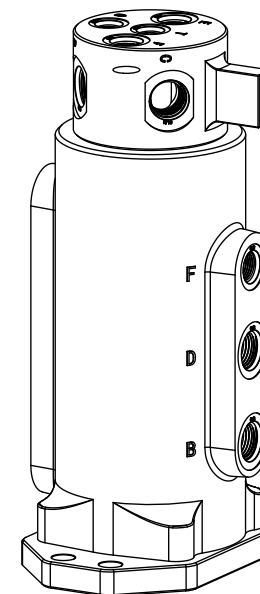
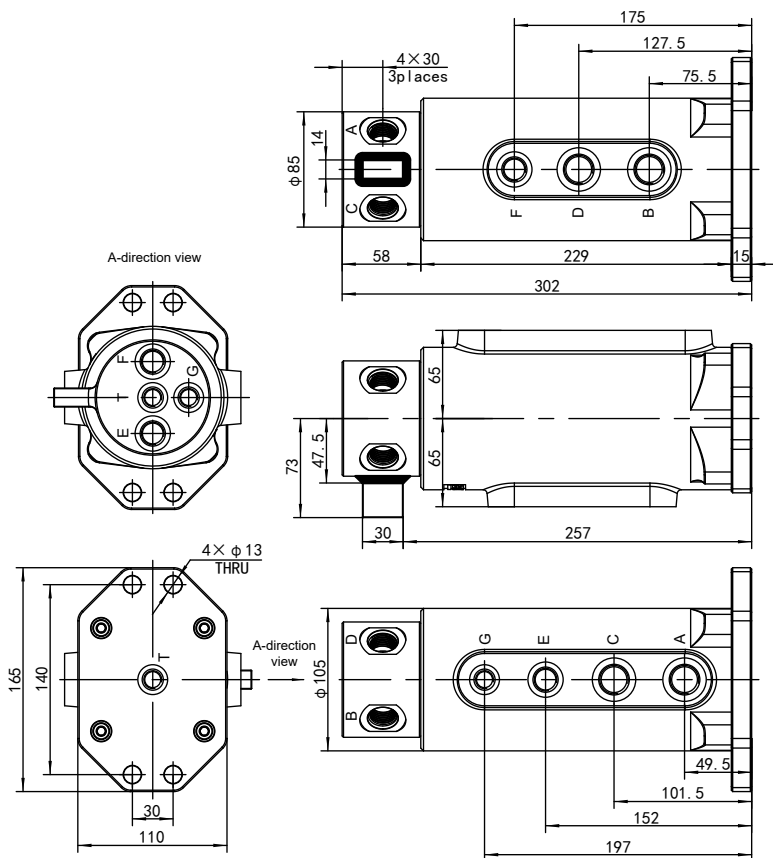


Port

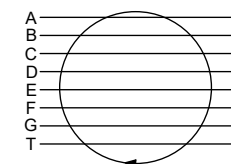


Outline drawing

RSJ-8-10



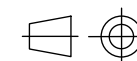
Schematic diagram



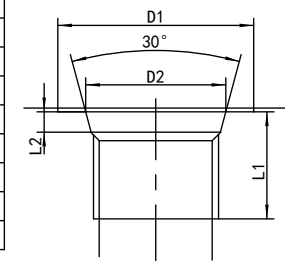
Technical parameters

Parameter	Model	RSJ-8-10
Oil port thread	G1/2	D1=34 L1=16 D2=22.6 L2=2.7(A.B.C.D)
	G3/8	D1=26 L1=13 D2=18.6 L2=2.7(E.F)
	G1/4	D1=22 L1=13 D2=15.6 L2=2.7(G.T)
Oil port standard		JIS B 2351
Max flow		85L/min(A.B.C.D)&40L/min(E.F)&20L/min(G)
Max pressure		31.5MPa(A.B.C.D.E.F)&5MPa(G)&0.5MPa(T)
Diameter		12mm(A.B.C.D)&8mm(E.F)&6mm(G)
Rotation ways		8
Starting torque		≤180N.m
Rotation torque		≤140N.m
Rotation speed		≤15r/min
Weight		16.9kg
Operating temperature		-30~100°C
Working medium		46#Anti-wear hydraulic oil
Oil cleanliness		NAS1638 9&ISO4406 20/18/15
Surface protection		Spray painting

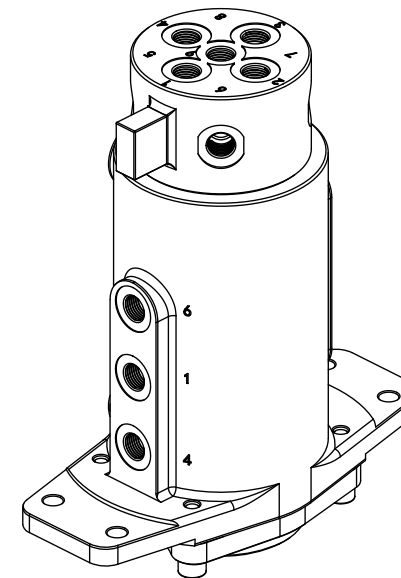
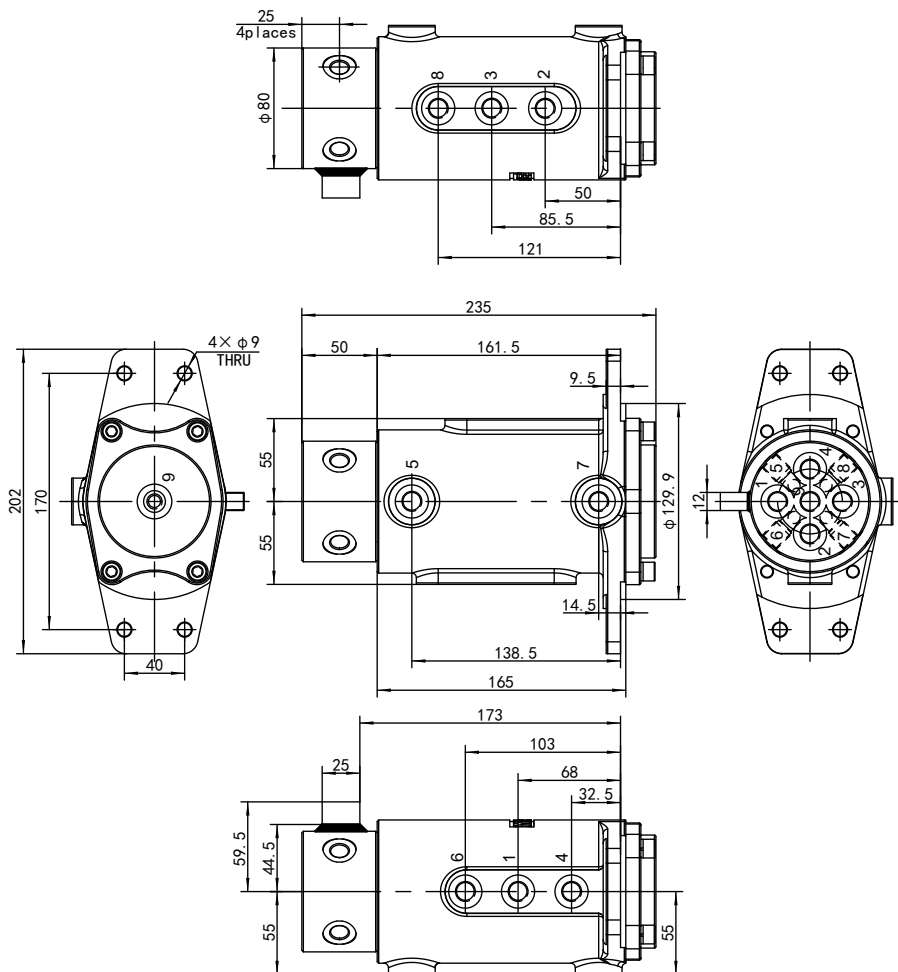
View



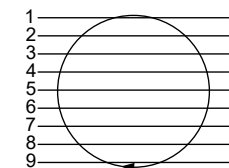
Port



Outline drawing **RSJ-9-1**



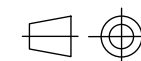
Schematic diagram



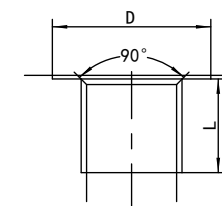
Technical parameters

Parameter	Model	RSJ-9-1
Oil port thread		G1/4 D=22 L=13
Oil port standard		ISO 1179-1
Max flow		25L/min
Max pressure		25MPa(1~8)&0.5MPa(9)
Diameter		6mm
Rotation ways		9
Starting torque		≤180N.m
Rotation torque		≤140N.m
Rotation speed		≤15r/min
Weight		11.1kg
Operating temperature		-30~100°C
Working medium		46#Anti-wear hydraulic oil
Oil cleanliness		NAS1638 9&ISO4406 20/18/15
Surface protection		Spray painting

View

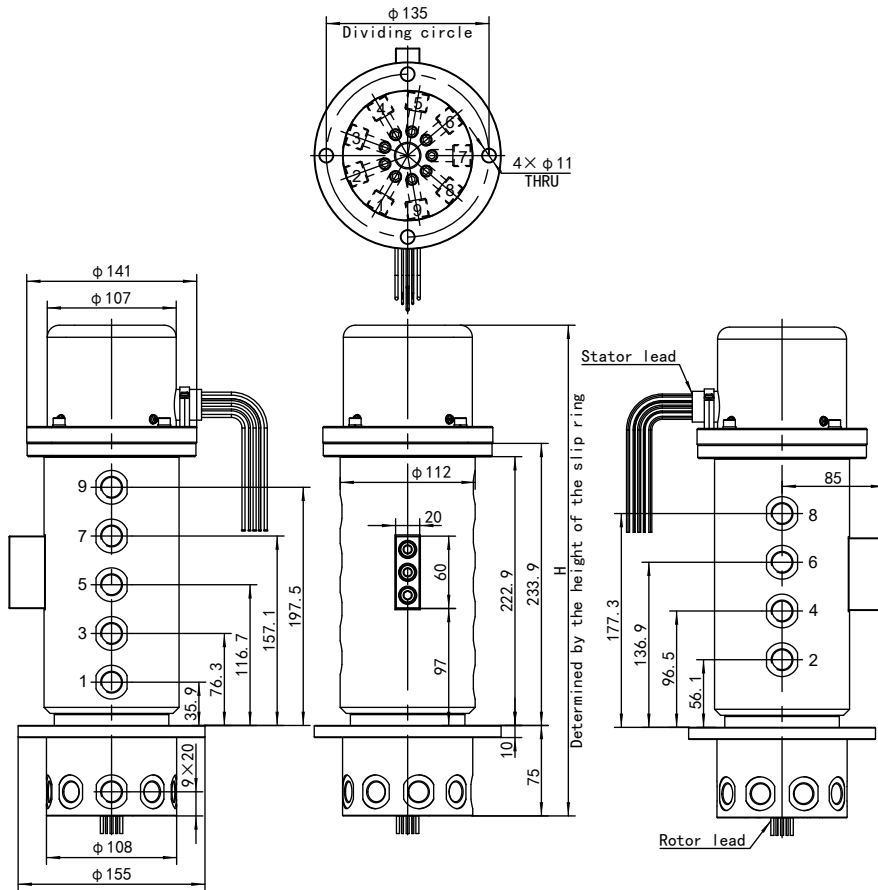


Port



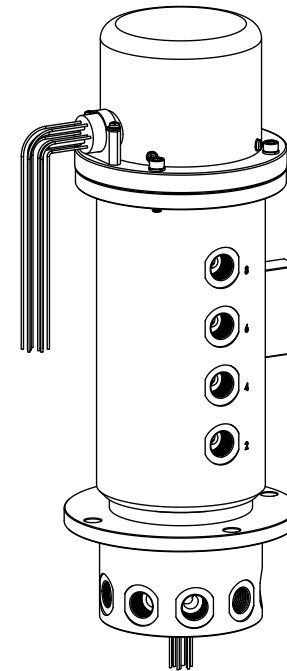
Outline drawing

RSJ-9-2SR*



RSJ-9-2SR*

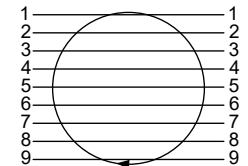
Number of slip ring channels
ex.: 12(12 Channels)



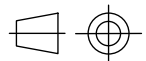
Technical parameters

Parameter	Model	RSJ-9-2SR*
Oil port thread		M18×1.5 D=26 L=15
Oil port standard		ISO 9974-1
Max flow		60L/min
Max pressure		25MPa
Diameter		10mm
Rotation ways		9
Starting torque		≤180N.m
Rotation torque		≤140N.m
Rotation speed		≤15r/min
Weight		20.3kg(Without slip ring)
Operating temperature		-30~100°C
Working medium		46#Anti-wear hydraulic oil
Oil cleanliness		NAS1638 9&ISO4406 20/18/15
Surface protection		Spray painting

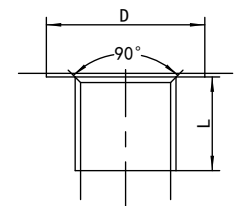
Schematic diagram



View

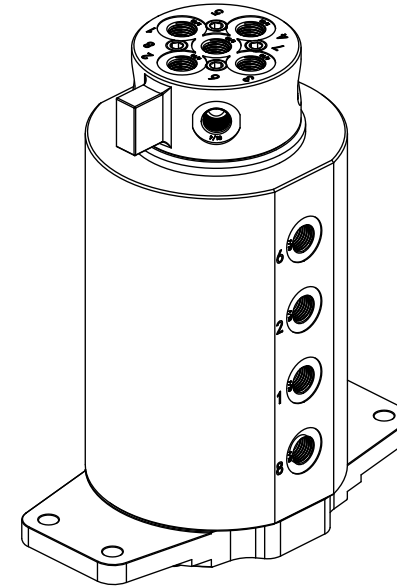
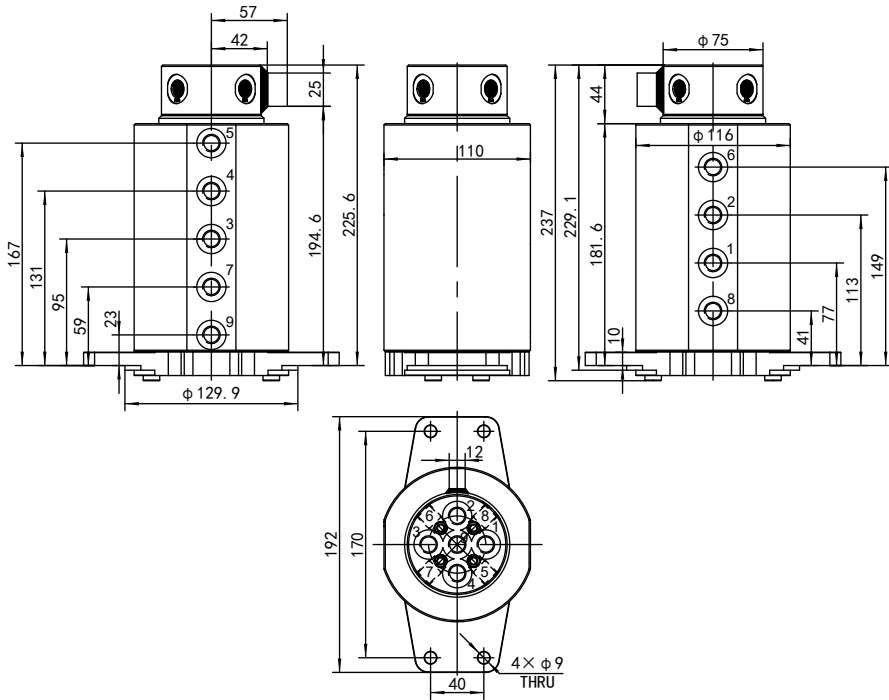


Port

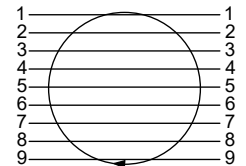


Outline drawing

RSJ-9-4



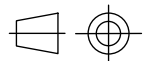
Schematic diagram



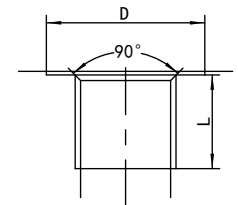
Technical parameters

Parameter	Model	RSJ-9-4
Oil port thread		G1/4 D=22 L=13
Oil port standard		ISO 1179-1
Max flow		25L/min
Max pressure		25MPa(1~8)&0.5MPa(9)
Diameter		6mm
Rotation ways		9
Starting torque		≤140N.m
Rotation torque		≤100N.m
Rotation speed		≤15r/min
Weight		14.5kg
Operating temperature		-30~100°C
Working medium		46#Anti-wear hydraulic oil
Oil cleanliness		NAS1638 9&ISO4406 20/18/15
Surface protection		Spray painting

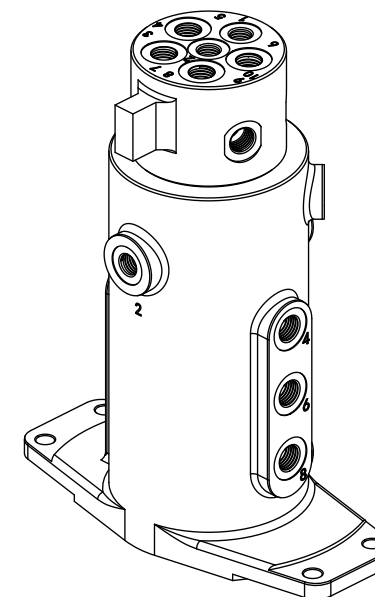
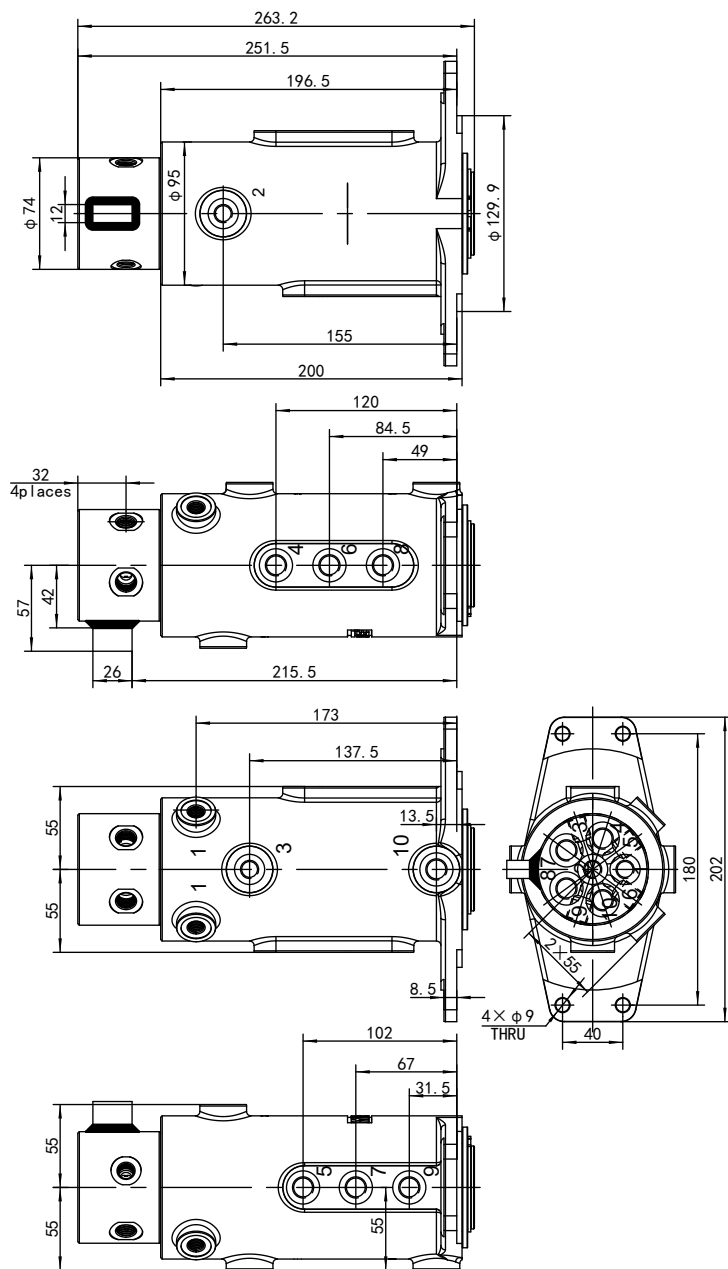
View



Port



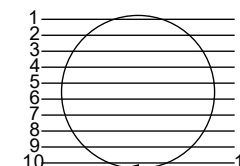
Outline drawing **RSJ-10-1**



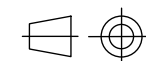
Technical parameters

Parameter	Model	RSJ-10-1
Oil port thread		M12×1.5 D=20 L=13(1~3)
		M14×1.5 D=22 L=13(4~10)
Oil port standard		ISO 9974-1
Max flow		30L/min
Max pressure		25MPa
Diameter		6mm
Rotation ways		10
Starting torque		≤180N.m
Rotation torque		≤140N.m
Rotation speed		≤15r/min
Weight		11.7kg(不含电滑环)
Operating temperature		-30~100°C
Working medium		46#Anti-wear hydraulic oil
Oil cleanliness		NAS1638 9&ISO4406 20/18/15
Surface protection		Spray painting

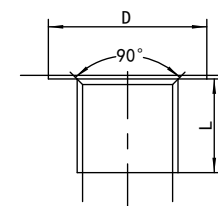
Schematic diagram



View

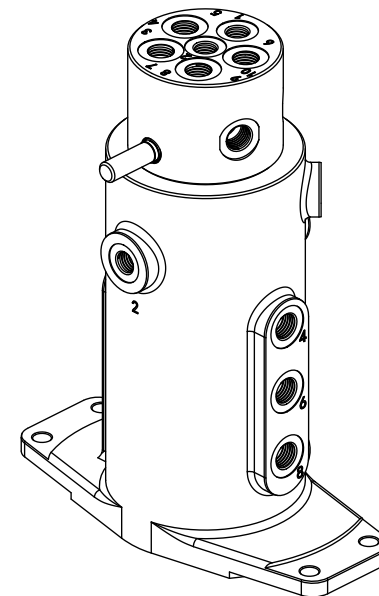
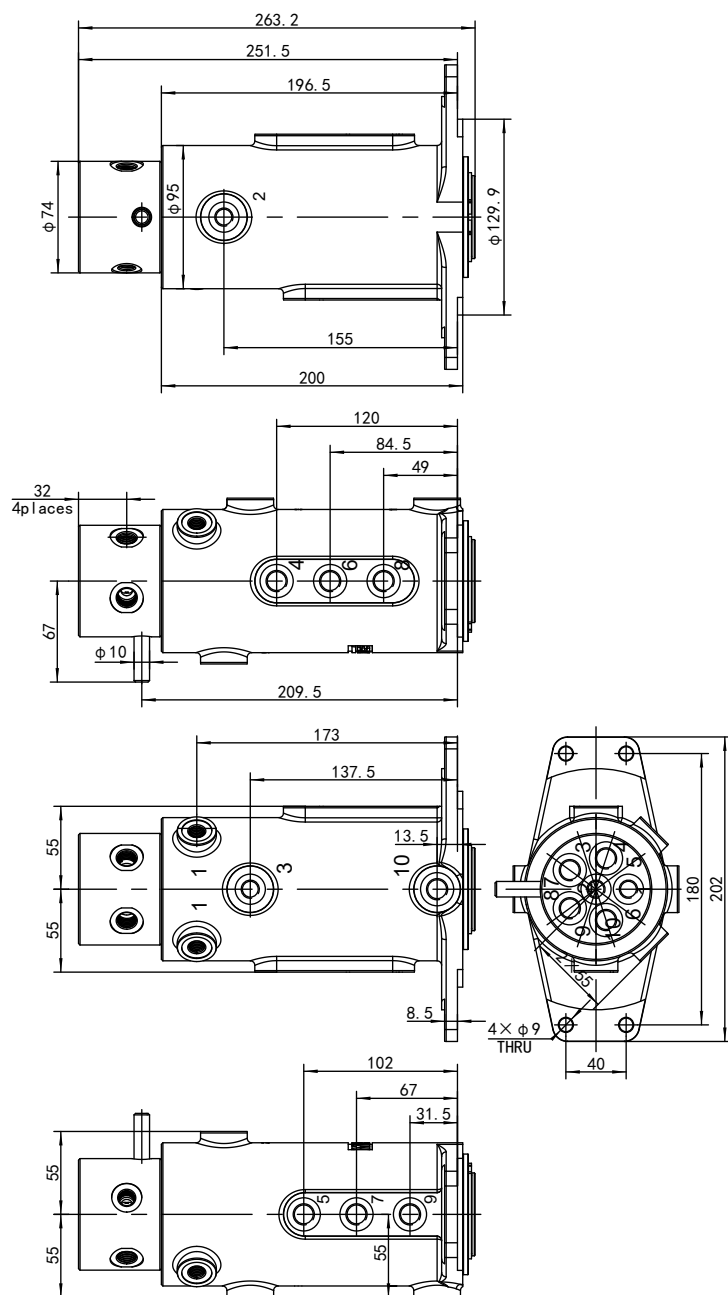


Port

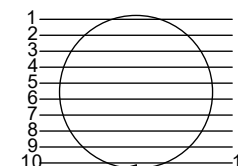


Outline drawing

RSJ-10-2



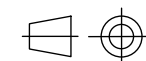
Schematic diagram



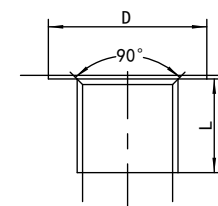
Technical parameters

Parameter	Model	RSJ-10-2
Oil port thread		M12×1.5 D=20 L=13(1~3)
		M14×1.5 D=22 L=13(4~10)
Oil port standard		ISO 9974-1
Max flow		30L/min
Max pressure		25MPa
Diameter		6mm
Rotation ways		10
Starting torque		≤180N.m
Rotation torque		≤140N.m
Rotation speed		≤15r/min
Weight		11.7kg
Operating temperature		-30~100°C
Working medium		46#Anti-wear hydraulic oil
Oil cleanliness		NAS1638 9&ISO4406 20/18/15
Surface protection		Spray painting

View

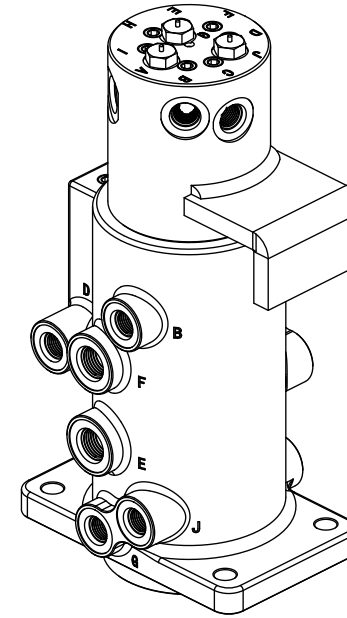
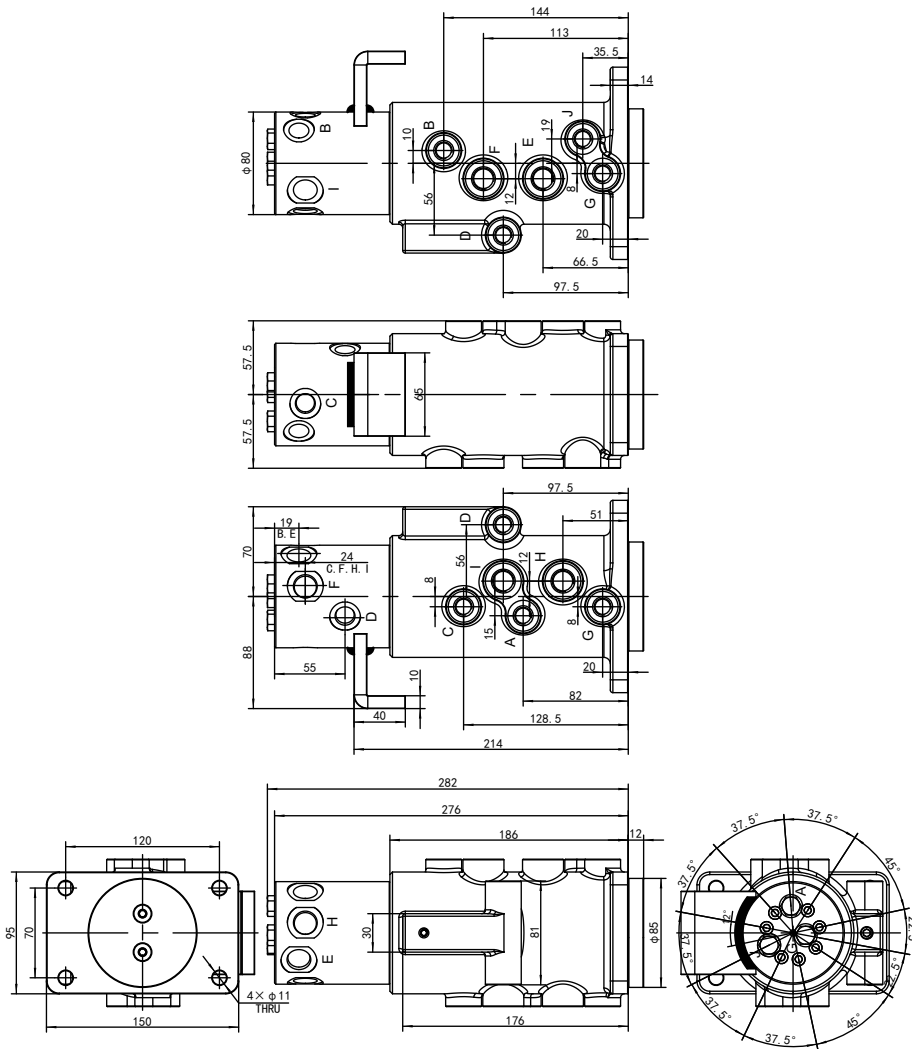


Port

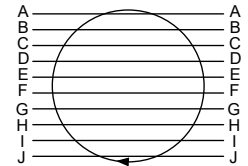


Outline drawing

RSJ-10-3



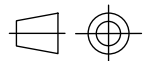
Schematic diagram



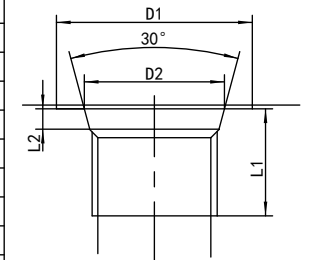
Technical parameters

Parameter	Model	RSJ-10-3
Oil port thread		G1/8 D1=18 L1=10 D2=11.6 L2=1.5(A.G./Rotary axis)
		G1/4 D1=22 L1=13 D2=15.6 L2=2.7(A.G./Rotary body)
		G1/4 D1=22 L1=13 D2=15.6 L2=2.7(B.C.D)
		G3/8 D1=28 L1=15 D2=18.6 L2=2.7(E.F.H.I)
Oil port standard		JIS B 2351
Max flow		20L/min(A.B.C.D.G.J)&40L/min(E.F.H.I)
Max pressure		25MPa
Diameter		6mm(A.B.C.D.G.J)&8mm(E.F.H.I)
Rotation ways		10
Starting torque		≤180N.m
Rotation torque		≤140N.m
Rotation speed		≤15r/min
Weight		13.6kg
Operating temperature		-30~100℃
Working medium		46#Anti-wear hydraulic oil
Oil cleanliness		NAS1638 9&ISO4406 20/18/15
Surface protection		Spray painting

View

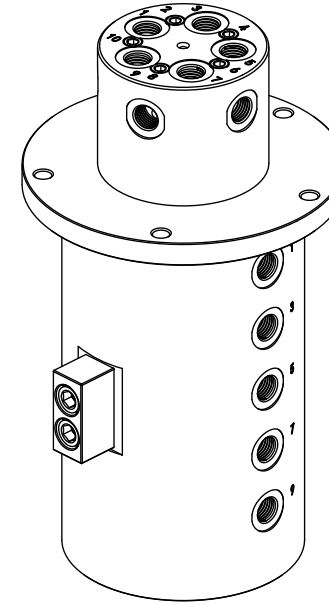
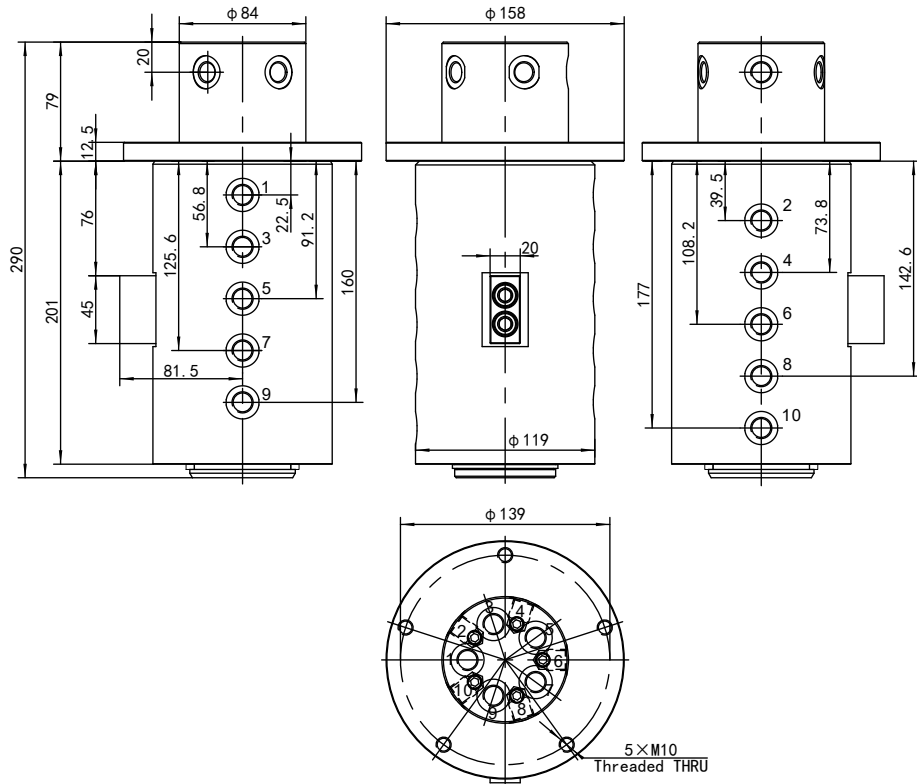


Port

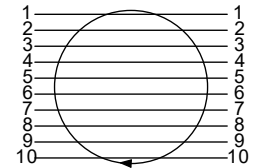


Outline drawing

RSJ-10-4



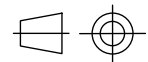
Schematic diagram



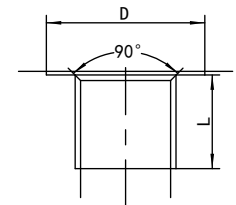
Technical parameters

Parameter	Model	RSJ-10-4
Oil port thread		M14×1.5 D=22 L=13
Oil port standard		ISO 9974-1
Max flow		25L/min
Max pressure		25MPa
Diameter		6mm
Rotation ways		10
Starting torque		≤140N.m
Rotation torque		≤100N.m
Rotation speed		≤15r/min
Weight		19.5kg
Operating temperature		-30~100°C
Working medium		46#Anti-wear hydraulic oil
Oil cleanliness		NAS1638 9&ISO4406 20/18/15
Surface protection		Spray painting

View

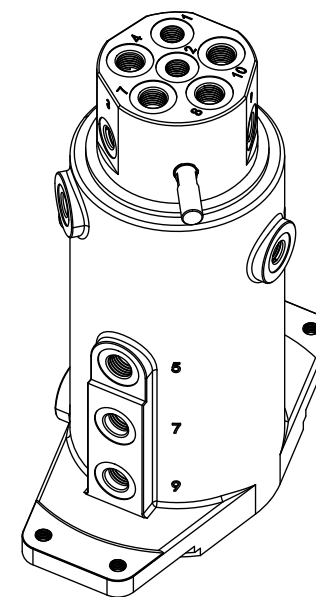
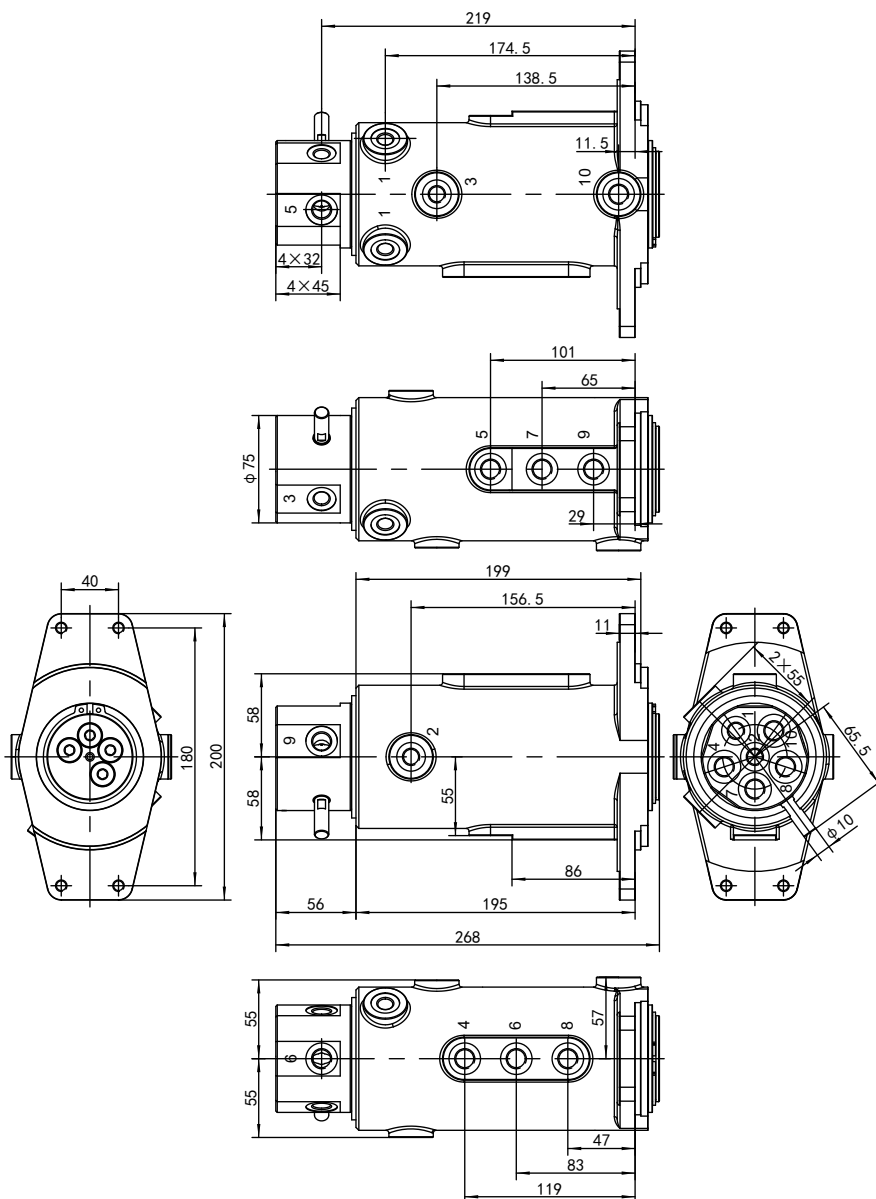


Port

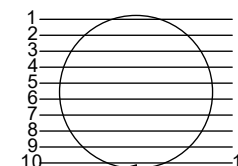


Outline drawing

RSJ-10-5



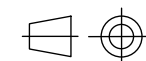
Schematic diagram



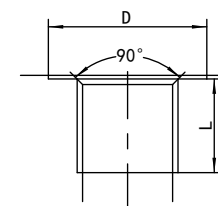
Technical parameters

Parameter	Model	RSJ-10-5
Oil port thread		M12×1.5 D=20 L=13(1~3)
		M14×1.5 D=22 L=13(4~10)
Oil port standard		ISO 9974-1
Max flow		30L/min
Max pressure		25MPa
Diameter		6mm
Rotation ways		10
Starting torque		≤180N.m
Rotation torque		≤140N.m
Rotation speed		≤15r/min
Weight		13.5kg
Operating temperature		-30~100°C
Working medium		46#Anti-wear hydraulic oil
Oil cleanliness		NAS1638 9&ISO4406 20/18/15
Surface protection		Spray painting

View

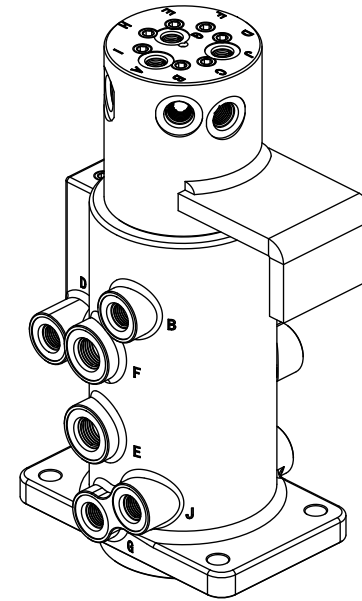
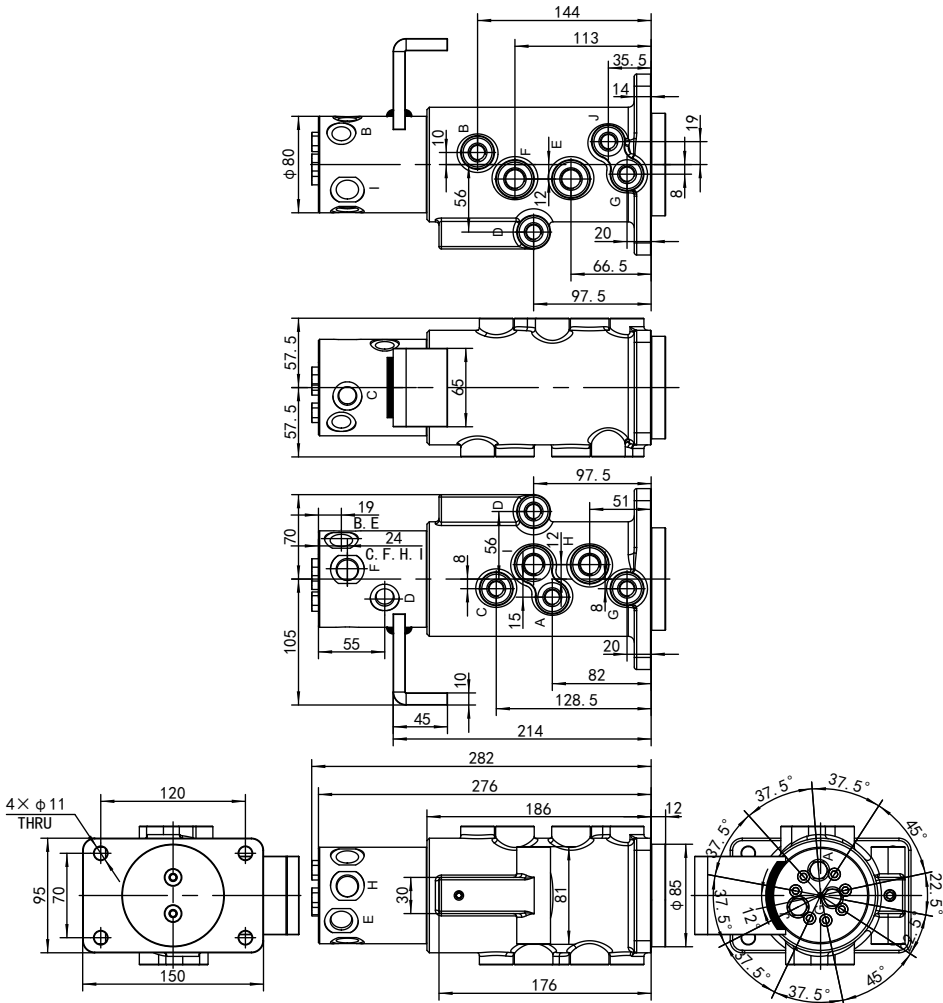


Port

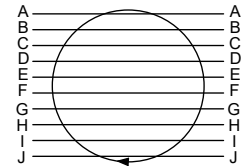


Outline drawing

RSJ-10-6



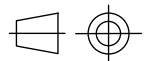
Schematic diagram



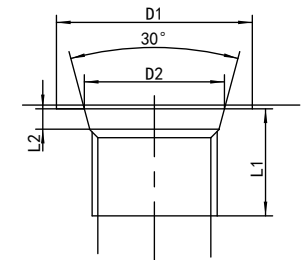
Technical parameters

Parameter	Model	RSJ-10-6
Oil port thread		G1/8 D1=18 L1=10 D2=11.6 L2=1.5(A.G./Rotary axis)
		G1/4 D1=22 L1=13 D2=15.6 L2=2.7(A.G./Rotary body)
		G1/4 D1=22 L1=13 D2=15.6 L2=2.7(B.C.D)
Oil port standard		JIS B 2351
		G3/8 D1=28 L1=15 D2=18.6 L2=2.7(E.F.H.I)
Max flow		20L/min(A.B.C.D.G.J)&40L/min(E.F.H.I)
Max pressure		25MPa
Diameter		6mm(A.B.C.D.G.J)&8mm(E.F.H.I)
Rotation ways		10
Starting torque		≤180N.m
Rotation torque		≤140N.m
Rotation speed		≤15r/min
Weight		13.7kg
Operating temperature		-30~100°C
Working medium		46#Anti-wear hydraulic oil
Oil cleanliness		NAS1638 9&ISO4406 20/18/15
Surface protection		Spray painting

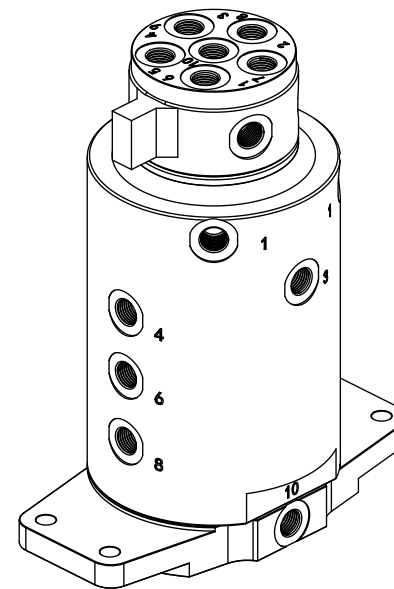
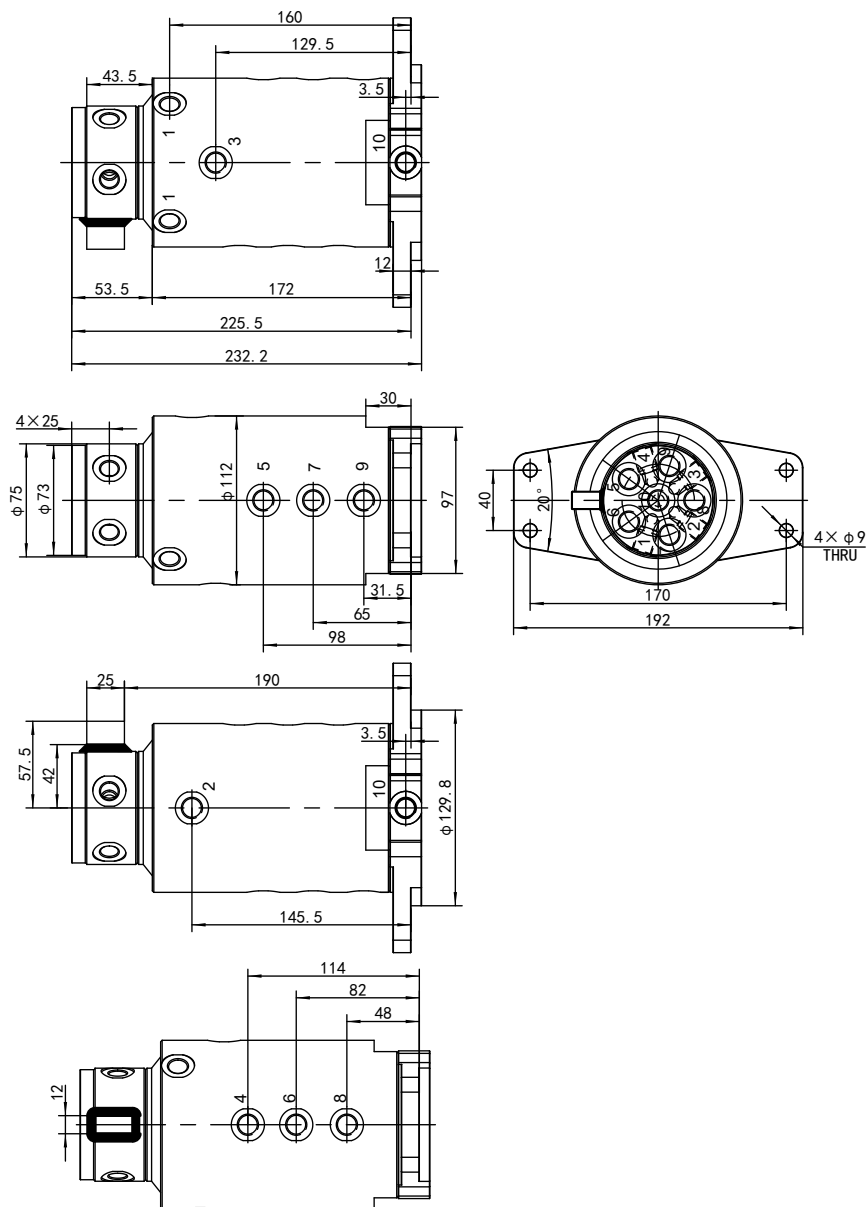
View



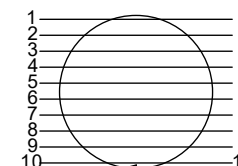
Port



Outline drawing **RSJ-10-9**



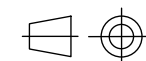
Schematic diagram



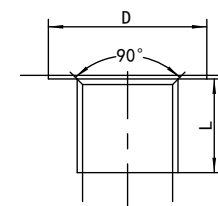
Technical parameters

Parameter	Model	RSJ-10-9
Oil port thread		G1/4 D=22 L=13
Oil port standard		ISO 1179-1
Max flow		15L/min(1~5)&25L/min(4~10)
Max pressure		25MPa(1~9)&0.5MPa(10)
Diameter		6mm
Rotation ways		10
Starting torque		≤140N.m
Rotation torque		≤100N.m
Rotation speed		≤15r/min
Weight		13.3kg
Operating temperature		-30~100°C
Working medium		46#Anti-wear hydraulic oil
Oil cleanliness		NAS1638 9&ISO4406 20/18/15
Surface protection		Spray painting

View



Port





FLUKS
YOUR HYDRAULIC SOLUTIONS PARTNER

www.tgb-group.com



FLUKS

YOUR HYDRAULIC SOLUTIONS PARTNER

www.tgb-group.com