

ARGENTA INOX SERIES

IP66 STAINLESS STEEL WALL-MOUNTING CABINETS

Description: IP66 304L-INOX WALL-MOUNTING CABINET 300x200x150

Reference:

INX302015

Characteristics:

Product type:	304L Stainless steel wall-mounting cabinet
Dimensions cabinet:	(AxBxC) 300x200x150 mm
Installation:	Surface
Type of door:	Single opaque door. Reversible
Locking:	5-mm double-bit painted zamak lock - One 1-point lock
Finish:	Scotch 320 satin finish
Colour:	-
Mounting plate:	With flat mounting plate. 2-mm galvanised sheet steel
Weight (kg):	3,9
Materials:	AISI 304L stainless steel
Thickness:	Enclosure: 1,2 mm. Door: 1,2 mm.
Sealing gasket:	Injected polyurethane sealing gasket
Door material:	
Capacity:	
Max. cabinet load:	150 kg
Max. mounting plate load:	125 kg
Max. door load:	25 kg

Technical data:

Degree of protection:	IP66
NEMA degree of protection:	NEMA 1, 4, 4x, 12
Resistance to impact:	IK10
Ambient temperature range:	-25 °C / +60 °C
Maximum operating voltage:	1000 V AC / 1500 V DC

Certificates and standards:

Directive:	2014/35/EU
Standards:	IEC 62208, IEC 61439-1
Certificates:	UL508A



Codes:

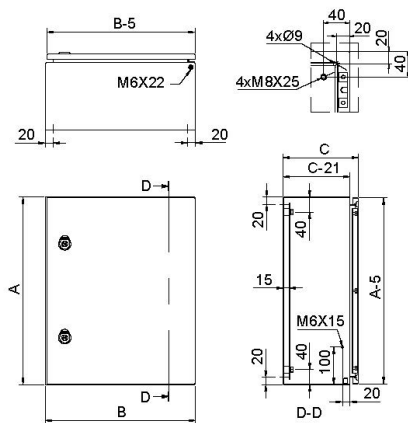
EAN:	8431044088563
Customs tariff number:	85.38.10.00
ETIM 8.0:	EC000261

ARGENTA INOX SERIES

IP66 STAINLESS STEEL WALL-MOUNTING CABINETS

Description: IP66 304L-INOX WALL-MOUNTING CABINET 300x200x150

Reference: INX302015



Standard drawing

Detailed drawing:

 <https://www.ide.es/downloads/planos/stp/INX302015.stp>



Cable entry:	-	Body to be flush-fitted:	-
Wall fixing:	(HeightxWidth) 260x160 mm	Wall fixing material:	-
Inside usable space:	(HeightxWidthxDepth) 250x150x129 mm	Glass door with transparent panel:	-
No. Hinges:	2	Door profiles:	-

Sustainability:

RoHS - REACH

Supply:

Supplied in individual packaging containing cabinet, plate and accessory bag. The cabinet is protected by a plastic bag. Mounting plate is supplied unassembled inside the packaging.

Product end of life:

It does not require specific recycling operations.

Recommended applications:

Industrial environments and outdoor facilities with aggressive agents or saline environments. food, chemical and petrochemical industries, where a high degree of hygiene is required.